

## ARG55454 anti-TIM50 antibody

Package: 100 µl  
Store at: -20°C

### Summary

Product Description	Rabbit Polyclonal antibody recognizes TIM50
Tested Reactivity	Hu
Tested Application	WB
Host	Rabbit
Clonality	Polyclonal
Isotype	IgG
Target Name	TIM50
Species	Human
Immunogen	KLH-conjugated synthetic peptide corresponding to aa. 25-56 (N-terminus) of Human TIM50.
Conjugation	Un-conjugated
Alternate Names	TIM50L; Mitochondrial import inner membrane translocase subunit TIM50; TIM50

### Application Instructions

Application table	Application	Dilution
	WB	1:1000
Application Note	* The dilutions indicate recommended starting dilutions and the optimal dilutions or concentrations should be determined by the scientist.	
Positive Control	HeLa	

### Properties

Form	Liquid
Purification	Purification with Protein A and immunogen peptide.
Buffer	PBS and 0.09% (W/V) Sodium azide
Preservative	0.09% (W/V) Sodium azide
Storage instruction	For continuous use, store undiluted antibody at 2-8°C for up to a week. For long-term storage, aliquot and store at -20°C or below. Storage in frost free freezers is not recommended. Avoid repeated freeze/thaw cycles. Suggest spin the vial prior to opening. The antibody solution should be gently mixed before use.
Note	For laboratory research only, not for drug, diagnostic or other use.

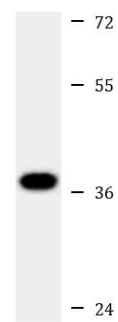
### Bioinformation

Database links	<a href="#">GeneID: 92609 Human</a>
----------------	-------------------------------------

Gene Symbol	TIMM50
Gene Full Name	translocase of inner mitochondrial membrane 50 homolog (S. cerevisiae)
Function	Essential component of the TIM23 complex, a complex that mediates the translocation of transit peptide-containing proteins across the mitochondrial inner membrane. Has some phosphatase activity in vitro; however such activity may not be relevant in vivo. Isoform 2 may participate in the release of snRNPs and SMN from the Cajal body. [UniProt]
Research Area	Metabolism antibody; Signaling Transduction antibody
Calculated Mw	40 kDa
Cellular Localization	Mitochondrion inner membrane; Single-pass membrane protein

## Images

---



HeLa

ARG55454 anti-TIM50 antibody WB image

Western blot: 35 µg of HeLa cell lysate stained with ARG55454 anti-TIM50 antibody at 1:1000 dilution.