

## ARG55504 anti-BCAP31 / BAP31 antibody

Package: 100 µl  
Store at: -20°C

### Summary

Product Description	Rabbit Polyclonal antibody recognizes BCAP31 / BAP31
Tested Reactivity	Hu, Ms, Rat
Tested Application	ICC/IF, IP, WB
Host	Rabbit
Clonality	Polyclonal
Isotype	IgG
Target Name	BCAP31 / BAP31
Species	Human
Immunogen	Recombinant protein of Human BCAP31
Conjugation	Un-conjugated
Alternate Names	BAP31; Bap31; 6C6-AG; DXS1357E; CDM; BCR-associated protein 31; 6C6-AG tumor-associated antigen; p28; Protein CDM; B-cell receptor-associated protein 31; DDCH

### Application Instructions

Application table	Application	Dilution
	ICC/IF	1:50 - 1:100
	IP	Assay-dependent
	WB	1:500 - 1:2000
Application Note	* The dilutions indicate recommended starting dilutions and the optimal dilutions or concentrations should be determined by the scientist.	
Positive Control	HeLa	

### Properties

Form	Liquid
Purification	Affinity purification with immunogen.
Buffer	PBS (pH 7.3), 0.02% Sodium azide and 50% Glycerol
Preservative	0.02% Sodium azide
Stabilizer	50% Glycerol
Storage instruction	For continuous use, store undiluted antibody at 2-8°C for up to a week. For long-term storage, aliquot and store at -20°C. Storage in frost free freezers is not recommended. Avoid repeated freeze/thaw cycles. Suggest spin the vial prior to opening. The antibody solution should be gently mixed before use.
Note	For laboratory research only, not for drug, diagnostic or other use.

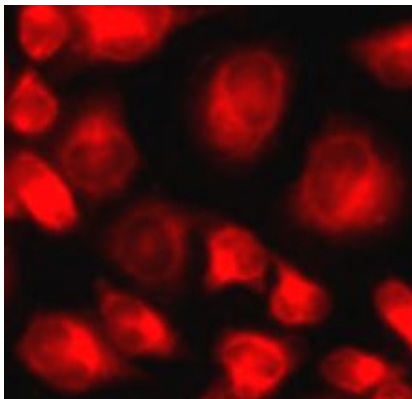
## Bioinformation

---

Database links	<a href="#">GeneID: 10134 Human</a> <a href="#">GeneID: 27061 Mouse</a> <a href="#">Swiss-port # P51572 Human</a> <a href="#">Swiss-port # Q61335 Mouse</a>
Gene Symbol	BCAP31
Gene Full Name	B-cell receptor-associated protein 31
Background	This gene encodes a member of the B-cell receptor associated protein 31 superfamily. The encoded protein is a multi-pass transmembrane protein of the endoplasmic reticulum that is involved in the anterograde transport of membrane proteins from the endoplasmic reticulum to the Golgi and in caspase 8-mediated apoptosis. Microdeletions in this gene are associated with contiguous ABCD1/DXS1375E deletion syndrome (CADD5), a neonatal disorder. Alternative splicing of this gene results in multiple transcript variants. Two related pseudogenes have been identified on chromosome 16. [provided by RefSeq, Jan 2012]
Function	Functions as a chaperone protein. Is one of the most abundant endoplasmic reticulum (ER) proteins. Plays a role in the export of secreted proteins in the ER, the recognition of abnormally folded protein and their targeting to the ER associated-degradation (ERAD). Also serves as a cargo receptor for the export of transmembrane proteins. May be involved in CASP8-mediated apoptosis. [UniProt]
Research Area	Cell Biology and Cellular Response antibody; Cell Death antibody
Calculated Mw	28 kDa
PTM	Cleaved by CASP8 and other caspases.

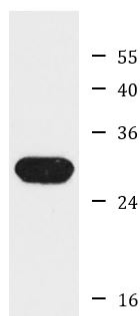
## Images

---



ARG55504 anti-BCAP31 / BAP31 antibody ICC/IF image

Immunofluorescence: U2OS cells stained with ARG55504 anti-BCAP31 / BAP31 antibody.



HeLa

ARG55504 anti-BCAP31 / BAP31 antibody WB image

Western blot: HeLa cell lysate stained with ARG55504 anti-BCAP31 / BAP31 antibody.