

ARG55538 anti-ChAT antibody

Package: 100 µl
Store at: -20°C

Summary

| | |
|---------------------|---|
| Product Description | Rabbit Polyclonal antibody recognizes ChAT |
| Tested Reactivity | Hu, Ms |
| Tested Application | ICC/IF, WB |
| Host | Rabbit |
| Clonality | Polyclonal |
| Isotype | IgG |
| Target Name | ChAT |
| Species | Human |
| Immunogen | KLH-conjugated synthetic peptide corresponding to aa. 98-128 (N-terminus) of Human ChAT. |
| Conjugation | Un-conjugated |
| Alternate Names | CMS1A; Choline acetylase; CHOACTase; CHOACTASE; EC 2.3.1.6; CMS6; Choline O-acetyltransferase; ChAT; CMS1A2 |

Application Instructions

| | | |
|-------------------|--|-------------|
| Application table | Application | Dilution |
| | ICC/IF | 1:10 - 1:50 |
| | WB | 1:1000 |
| Application Note | * The dilutions indicate recommended starting dilutions and the optimal dilutions or concentrations should be determined by the scientist. | |
| Positive Control | NCI-H460 | |

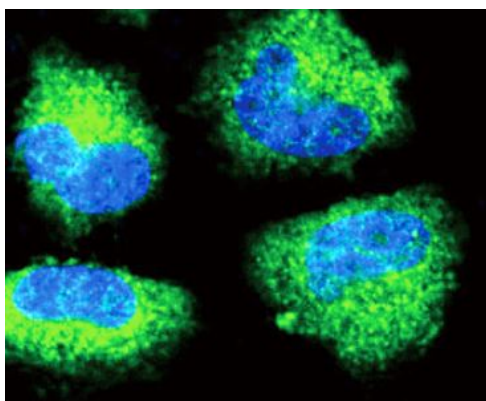
Properties

| | |
|---------------------|--|
| Form | Liquid |
| Purification | This antibody is prepared by Saturated Ammonium Sulfate (SAS) precipitation followed by dialysis against PBS. |
| Buffer | PBS and 0.09% (W/V) Sodium azide |
| Preservative | 0.09% (W/V) Sodium azide |
| Storage instruction | For continuous use, store undiluted antibody at 2-8°C for up to a week. For long-term storage, aliquot and store at -20°C or below. Storage in frost free freezers is not recommended. Avoid repeated freeze/thaw cycles. Suggest spin the vial prior to opening. The antibody solution should be gently mixed before use. |
| Note | For laboratory research only, not for drug, diagnostic or other use. |

Bioinformation

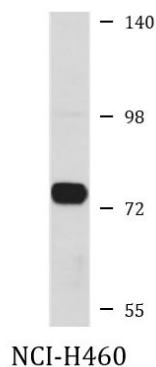
| | |
|----------------|--|
| Database links | GeneID: 1103 Human GeneID: 12647 Mouse Swiss-port # P28329 Human |
| Gene Symbol | CHAT |
| Gene Full Name | choline O-acetyltransferase |
| Background | This gene encodes an enzyme which catalyzes the biosynthesis of the neurotransmitter acetylcholine. This gene product is a characteristic feature of cholinergic neurons, and changes in these neurons may explain some of the symptoms of Alzheimer's disease. Polymorphisms in this gene have been associated with Alzheimer's disease and mild cognitive impairment. Mutations in this gene are associated with congenital myasthenic syndrome associated with episodic apnea. Multiple transcript variants encoding different isoforms have been found for this gene, and some of these variants have been shown to encode more than one isoform. [provided by RefSeq, May 2010] |
| Function | Catalyzes the reversible synthesis of acetylcholine (ACh) from acetyl CoA and choline at cholinergic synapses. [UniProt] |
| Research Area | Neuroscience antibody |
| Calculated Mw | 83 kDa |

Images



ARG55538 anti-ChAT antibody ICC/IF image

Immunofluorescence: NCI-H460 cells stained with ARG55538 anti-ChAT antibody (green). DAPI (blue) for nuclear staining.



ARG55538 anti-ChAT antibody WB image

Western blot: 35 µg of NCI-H460 cell lysate stained with ARG55538 anti-ChAT antibody.