

## ARG55559 anti-CHN1 antibody

Package: 100 µl  
Store at: -20°C

### Summary

Product Description	Rabbit Polyclonal antibody recognizes CHN1
Tested Reactivity	Hu
Predict Reactivity	Ms
Tested Application	WB
Host	Rabbit
Clonality	Polyclonal
Isotype	IgG
Target Name	CHN1
Species	Human
Immunogen	KLH-conjugated synthetic peptide corresponding to aa. 1-30 (N-terminus) of Human CHN1.
Conjugation	Un-conjugated
Alternate Names	Alpha-chimerin; Rho GTPase-activating protein 2; N-chimaerin; NC; CHN; A-chimaerin; RHOGAP2; N-chimerin; ARHGAP2; DURS2

### Application Instructions

Application table	Application	Dilution
	WB	1:1000
Application Note	* The dilutions indicate recommended starting dilutions and the optimal dilutions or concentrations should be determined by the scientist.	
Positive Control	Human brain	

### Properties

Form	Liquid
Purification	Purification with Protein A and immunogen peptide.
Buffer	PBS and 0.09% (W/V) Sodium azide
Preservative	0.09% (W/V) Sodium azide
Storage instruction	For continuous use, store undiluted antibody at 2-8°C for up to a week. For long-term storage, aliquot and store at -20°C or below. Storage in frost free freezers is not recommended. Avoid repeated freeze/thaw cycles. Suggest spin the vial prior to opening. The antibody solution should be gently mixed before use.
Note	For laboratory research only, not for drug, diagnostic or other use.

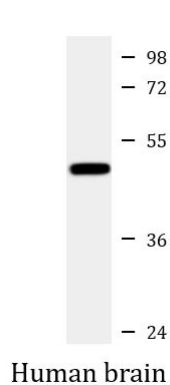
## Bioinformation

---

Database links	<a href="#">GeneID: 1123 Human</a> <a href="#">Swiss-port # P15882 Human</a>
Gene Symbol	CHN1
Gene Full Name	chimerin 1
Background	This gene encodes GTPase-activating protein for ras-related p21-rac and a phorbol ester receptor. It is predominantly expressed in neurons, and plays an important role in neuronal signal-transduction mechanisms. Mutations in this gene are associated with Duane's retraction syndrome 2 (DURS2). Alternatively spliced transcript variants encoding different isoforms have been described for this gene. [provided by RefSeq, Apr 2011]
Function	GTPase-activating protein for p21-rac and a phorbol ester receptor. Involved in the assembly of neuronal locomotor circuits as a direct effector of EPHA4 in axon guidance. [UniProt]
Research Area	Neuroscience antibody; Signaling Transduction antibody
Calculated Mw	53 kDa
PTM	Phosphorylated. Phosphorylation is EPHA4 kinase activity-dependent (By similarity).

## Images

---



ARG55559 anti-CHN1 antibody WB image

Western blot: 35 µg of Human brain lysate stained with ARG55559 anti-CHN1 antibody at 1:1000 dilution.