

ARG55560 anti-Collagen IX antibody

Package: 50 µl
Store at: -20°C

Summary

Product Description	Rabbit Polyclonal antibody recognizes Collagen IX
Tested Reactivity	Hu, Ms, Rat
Tested Application	IHC-P, WB
Host	Rabbit
Clonality	Polyclonal
Isotype	IgG
Target Name	Collagen IX
Species	Human
Immunogen	KLH-conjugated synthetic peptide corresponding to aa. 428-456 (Center) of Human Collagen IX.
Conjugation	Un-conjugated
Alternate Names	MED; EDM6; STL4; DJ149L1.1.2; Collagen alpha-1(IX) chain

Application Instructions

Application table	Application	Dilution
	IHC-P	1:10 - 1:50
	WB	1:1000
Application Note	* The dilutions indicate recommended starting dilutions and the optimal dilutions or concentrations should be determined by the scientist.	
Positive Control	MCF7	

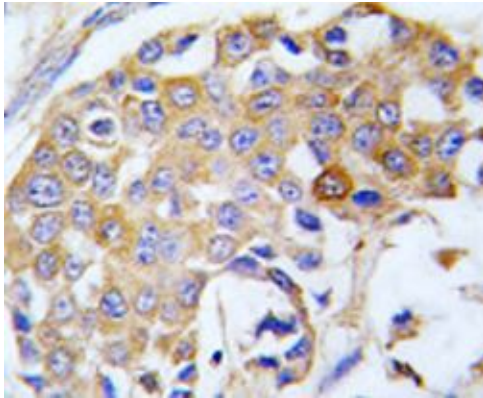
Properties

Form	Liquid
Purification	This antibody is prepared by Saturated Ammonium Sulfate (SAS) precipitation followed by dialysis against PBS.
Buffer	PBS and 0.09% (W/V) Sodium azide
Preservative	0.09% (W/V) Sodium azide
Storage instruction	For continuous use, store undiluted antibody at 2-8°C for up to a week. For long-term storage, aliquot and store at -20°C or below. Storage in frost free freezers is not recommended. Avoid repeated freeze/thaw cycles. Suggest spin the vial prior to opening. The antibody solution should be gently mixed before use.
Note	For laboratory research only, not for drug, diagnostic or other use.

Bioinformation

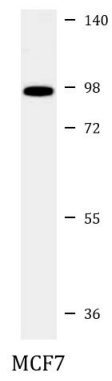
Database links	GeneID: 12839 Mouse GeneID: 1297 Human Swiss-port # P20849 Human Swiss-port # Q05722 Mouse
Gene Symbol	COL9A1
Gene Full Name	collagen, type IX, alpha 1
Background	This gene encodes one of the three alpha chains of type IX collagen, which is a minor (5-20%) collagen component of hyaline cartilage. Type IX collagen is usually found in tissues containing type II collagen, a fibrillar collagen. Studies in knockout mice have shown that synthesis of the alpha 1 chain is essential for assembly of type IX collagen molecules, a heterotrimeric molecule, and that lack of type IX collagen is associated with early onset osteoarthritis. Mutations in this gene are associated with osteoarthritis in humans, with multiple epiphyseal dysplasia, 6, a form of chondrodysplasia, and with Stickler syndrome, a disease characterized by ophthalmic, orofacial, articular, and auditory defects. Two transcript variants that encode different isoforms have been identified for this gene. [provided by RefSeq, Jul 2008]
Function	Structural component of hyaline cartilage and vitreous of the eye. [UniProt]
Research Area	Signaling Transduction antibody
Calculated Mw	92 kDa
PTM	Covalently linked to the telopeptides of type II collagen by lysine-derived cross-links. Prolines at the third position of the tripeptide repeating unit (G-X-Y) are hydroxylated in some or all of the chains.
Cellular Localization	Secreted, extracellular space, extracellular matrix

Images



ARG55560 anti-Collagen IX antibody IHC-P image

Immunohistochemistry: Formalin-fixed and paraffin-embedded Human breast carcinoma tissue stained with ARG55560 anti-Collagen IX antibody.



ARG55560 anti-Collagen IX antibody WB image

Western blot: 35 μ g of MCF7 cell lysate stained with ARG55560 anti-Collagen IX antibody.