

ARG55574 anti-ENO3 antibody

Package: 100 µl
Store at: -20°C

Summary

Product Description	Rabbit Polyclonal antibody recognizes ENO3
Tested Reactivity	Hu
Predict Reactivity	Ms, Rat, Bov, Pig
Tested Application	FACS, IHC-P, WB
Host	Rabbit
Clonality	Polyclonal
Isotype	IgG
Target Name	ENO3
Species	Human
Immunogen	KLH-conjugated synthetic peptide corresponding to aa. 237-264 (Center) of Human ENO3.
Conjugation	Un-conjugated
Alternate Names	Skeletal muscle enolase; Muscle-specific enolase; 2-phospho-D-glycerate hydro-lyase; Enolase 3; Beta-enolase; MSE; GSD13; EC 4.2.1.11

Application Instructions

Application table	Application	Dilution
	FACS	1:10 - 1:50
	IHC-P	1:50 - 1:100
	WB	1:1000
Application Note	* The dilutions indicate recommended starting dilutions and the optimal dilutions or concentrations should be determined by the scientist.	
Positive Control	Mouse skeletal muscle	

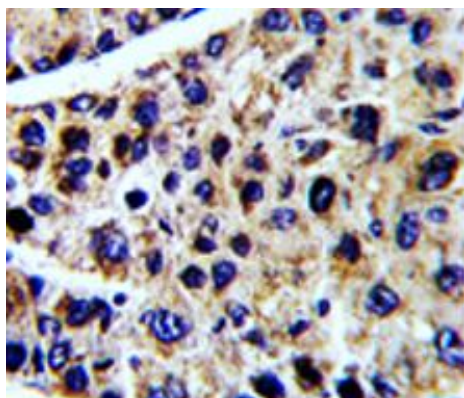
Properties

Form	Liquid
Purification	This antibody is prepared by Saturated Ammonium Sulfate (SAS) precipitation followed by dialysis against PBS.
Buffer	PBS and 0.09% (W/V) Sodium azide
Preservative	0.09% (W/V) Sodium azide
Storage instruction	For continuous use, store undiluted antibody at 2-8°C for up to a week. For long-term storage, aliquot and store at -20°C or below. Storage in frost free freezers is not recommended. Avoid repeated freeze/thaw cycles. Suggest spin the vial prior to opening. The antibody solution should be gently mixed before use.

Bioinformation

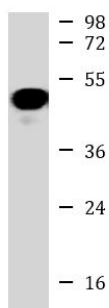
Database links	GeneID: 2027 Human Swiss-port # P13929 Human
Gene Symbol	ENO3
Gene Full Name	enolase 3 (beta, muscle)
Background	This gene encodes one of the three enolase isoenzymes found in mammals. This isoenzyme is found in skeletal muscle cells in the adult where it may play a role in muscle development and regeneration. A switch from alpha enolase to beta enolase occurs in muscle tissue during development in rodents. Mutations in this gene have be associated glycogen storage disease. Alternatively spliced transcript variants encoding different isoforms have been described.[provided by RefSeq, Jul 2010]
Function	Appears to have a function in striated muscle development and regeneration. [UniProt]
Research Area	Cancer antibody; Metabolism antibody; Signaling Transduction antibody
Calculated Mw	47 kDa
Cellular Localization	Cytoplasm. Note=Localized to the Z line. Some colocalization with CKM at M-band (By similarity)

Images



ARG55574 anti-ENO3 antibody IHC-P image

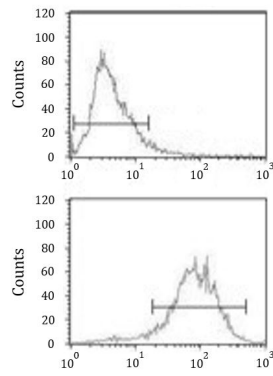
Immunohistochemistry: Formalin-fixed and paraffin-embedded Human hepatocarcinoma stained with ARG55574 anti-ENO3 antibody.



Mouse skeletal muscle

ARG55574 anti-ENO3 antibody WB image

Western blot: 35 µg of Mouse skeletal muscle lysate stained with ARG55574 anti-ENO3 antibody.



ARG55574 anti-ENO3 antibody FACS image

Flow Cytometry: HepG2 cells stained with ARG55574 anti-ENO3 antibody (bottom histogram) or without primary antibody as control (top histogram), followed by incubation with FITC labelled secondary antibody.