

ARG55587 anti-Glycerol kinase 2 antibody

Package: 100 µl
Store at: -20°C

Summary

Product Description	Rabbit Polyclonal antibody recognizes Glycerol kinase 2
Tested Reactivity	Hu
Predict Reactivity	Bov, Mk
Tested Application	IHC-P, WB
Host	Rabbit
Clonality	Polyclonal
Isotype	IgG
Target Name	Glycerol kinase 2
Species	Human
Immunogen	KLH-conjugated synthetic peptide corresponding to aa. 487-515 (C-terminus) of Human Glycerol kinase 2.
Conjugation	Un-conjugated
Alternate Names	Glycerol kinase, testis specific 2; GKP2; Glycerol kinase 2; EC 2.7.1.30; GKTA; Glycero kinase 2; GK 2; ATP:glycerol 3-phosphotransferase 2

Application Instructions

Application table	Application	Dilution
	IHC-P	1:50 - 1:100
	WB	1:1000
Application Note	* The dilutions indicate recommended starting dilutions and the optimal dilutions or concentrations should be determined by the scientist.	
Positive Control	Jurkat	

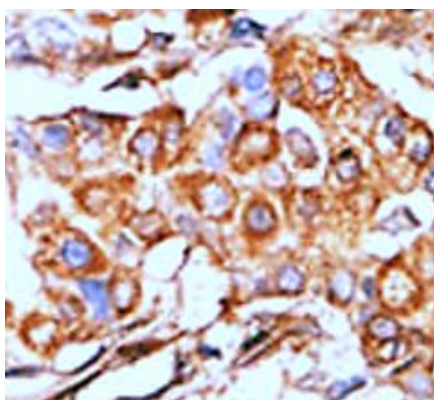
Properties

Form	Liquid
Purification	Purification with Protein G.
Buffer	PBS and 0.09% (W/V) Sodium azide
Preservative	0.09% (W/V) Sodium azide
Storage instruction	For continuous use, store undiluted antibody at 2-8°C for up to a week. For long-term storage, aliquot and store at -20°C or below. Storage in frost free freezers is not recommended. Avoid repeated freeze/thaw cycles. Suggest spin the vial prior to opening. The antibody solution should be gently mixed before use.
Note	For laboratory research only, not for drug, diagnostic or other use.

Bioinformation

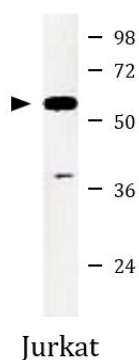
Database links	GeneID: 2712 Human Swiss-port # Q14410 Human
Gene Symbol	GK2
Gene Full Name	glycerol kinase 2
Function	Key enzyme in the regulation of glycerol uptake and metabolism. [UniProt]
Research Area	Metabolism antibody; Signaling Transduction antibody
Calculated Mw	61 kDa
Cellular Localization	Mitochondrion outer membrane; Peripheral membrane protein; Cytoplasmic side. Cytoplasm. Note=In sperm the majority of the enzyme is bound to mitochondria.

Images



ARG55587 anti-Glycerol kinase 2 antibody IHC-P image

Immunohistochemistry: Formalin-fixed and paraffin-embedded Human breast carcinoma tissue stained with ARG55587 anti-Glycerol kinase 2 antibody.



ARG55587 anti-Glycerol kinase 2 antibody WB image

Western blot: Jurkat cell lysate stained with ARG55587 anti-Glycerol kinase 2 antibody.