

## ARG55607 anti-SOCS1 antibody

Package: 100 µl  
Store at: -20°C

### Summary

Product Description	Rabbit Polyclonal antibody recognizes SOCS1
Tested Reactivity	Hu, Ms, Rat
Tested Application	FACS, ICC/IF, IHC-P, WB
Host	Rabbit
Clonality	Polyclonal
Isotype	IgG
Target Name	SOCS1
Species	Human
Immunogen	KLH-conjugated synthetic peptide corresponding to aa. 35-66 (N-terminus) of Human SOCS1.
Conjugation	Un-conjugated
Alternate Names	SOCS-1; Suppressor of cytokine signaling 1; TIP-3; CISH1; SSI-1; JAK-binding protein; CIS1; SSI1; Tec-interacting protein 3; TIP3; JAB; STAT-induced STAT inhibitor 1

### Application Instructions

Application table	Application	Dilution
	FACS	1:10 - 1:50
	ICC/IF	1:10 - 1:50
	IHC-P	1:10 - 1:50
	WB	1:1000
Application Note	* The dilutions indicate recommended starting dilutions and the optimal dilutions or concentrations should be determined by the scientist.	
Positive Control	Mouse kidney	

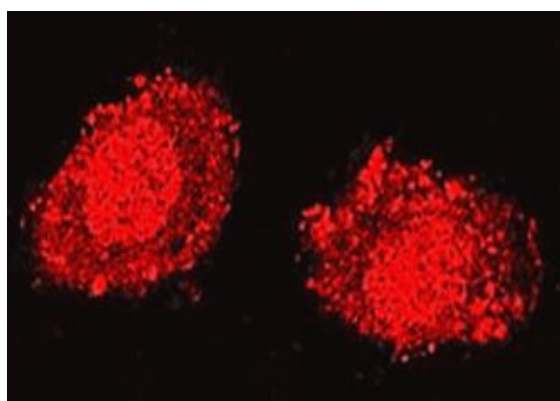
### Properties

Form	Liquid
Purification	This antibody is prepared by Saturated Ammonium Sulfate (SAS) precipitation followed by dialysis against PBS.
Buffer	PBS and 0.09% (W/V) Sodium azide
Preservative	0.09% (W/V) Sodium azide
Storage instruction	For continuous use, store undiluted antibody at 2-8°C for up to a week. For long-term storage, aliquot and store at -20°C or below. Storage in frost free freezers is not recommended. Avoid repeated freeze/thaw cycles. Suggest spin the vial prior to opening. The antibody solution should be gently mixed before use.

## Bioinformation

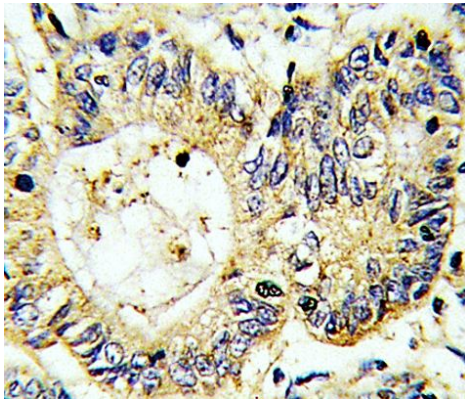
Database links	<a href="#">GeneID: 12703 Mouse</a> <a href="#">GeneID: 8651 Human</a> <a href="#">Swiss-port # O15524 Human</a> <a href="#">Swiss-port # O35716 Mouse</a>
Gene Symbol	SOCS1
Gene Full Name	suppressor of cytokine signaling 1
Background	This gene encodes a member of the STAT-induced STAT inhibitor (SSI), also known as suppressor of cytokine signaling (SOCS), family. SSI family members are cytokine-inducible negative regulators of cytokine signaling. The expression of this gene can be induced by a subset of cytokines, including IL2, IL3 erythropoietin (EPO), CSF2/GM-CSF, and interferon (IFN)-gamma. The protein encoded by this gene functions downstream of cytokine receptors, and takes part in a negative feedback loop to attenuate cytokine signaling. Knockout studies in mice suggested the role of this gene as a modulator of IFN-gamma action, which is required for normal postnatal growth and survival. [provided by RefSeq, Jul 2008]
Function	SOCS family proteins form part of a classical negative feedback system that regulates cytokine signal transduction. SOCS1 is involved in negative regulation of cytokines that signal through the JAK/STAT3 pathway. Through binding to JAKs, inhibits their kinase activity. In vitro, also suppresses Tec protein-tyrosine activity. Appears to be a major regulator of signaling by interleukin 6 (IL6) and leukemia inhibitory factor (LIF). Regulates interferon-gamma mediated sensory neuron survival (By similarity). Probable substrate recognition component of an ECS (Elongin BC-CUL2/5-SOCS-box protein) E3 ubiquitin ligase complex which mediates the ubiquitination and subsequent proteasomal degradation of target proteins. Seems to recognize JAK2. SOCS1 appears to be a negative regulator in IGF1R signaling pathway. [UniProt]
Research Area	Gene Regulation antibody; Immune System antibody; Signaling Transduction antibody
Calculated Mw	24 kDa

## Images



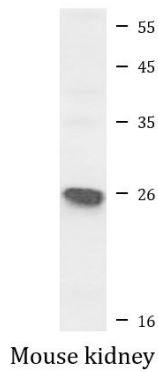
ARG55607 anti-SOCS1 antibody ICC/IF image

Immunofluorescence: 293 cells stained with ARG55607 anti-SOCS1 antibody.



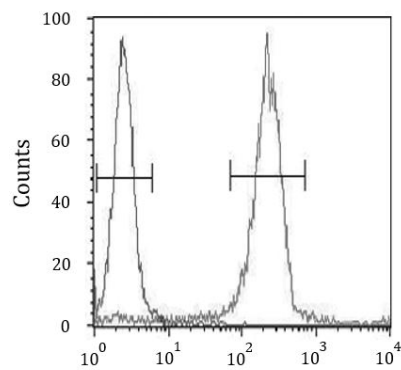
ARG55607 anti-SOCS1 antibody IHC-P image

Immunohistochemistry: Formalin-fixed and paraffin-embedded Human colon carcinoma stained with ARG55607 anti-SOCS1 antibody.



ARG55607 anti-SOCS1 antibody WB image

Western blot: 35 µg of Mouse kidney lysate stained with ARG55607 anti-SOCS1 antibody.



ARG55607 anti-SOCS1 antibody FACS image

Flow Cytometry: WiDr cells stained with ARG55607 anti-SOCS1 antibody (right histogram) or without primary antibody as control (left histogram), followed by incubation with FITC labelled secondary antibody.