

ARG55615
anti-CRTAP antibodyPackage: 100 µl
Store at: -20°C

Summary

Product Description	Rabbit Polyclonal antibody recognizes CRTAP
Tested Reactivity	Hu
Tested Application	ICC/IF, WB
Host	Rabbit
Clonality	Polyclonal
Isotype	IgG
Target Name	CRTAP
Species	Human
Immunogen	KLH-conjugated synthetic peptide corresponding to aa. 31-59 (N-terminus) of Human CRTAP.
Conjugation	Un-conjugated
Alternate Names	OI7; Cartilage-associated protein; P3H5; LEPREL3; CASP

Application Instructions

Application table	Application	Dilution
	ICC/IF	1:25
	WB	1:1000
Application Note	* The dilutions indicate recommended starting dilutions and the optimal dilutions or concentrations should be determined by the scientist.	
Positive Control	HT-1080	

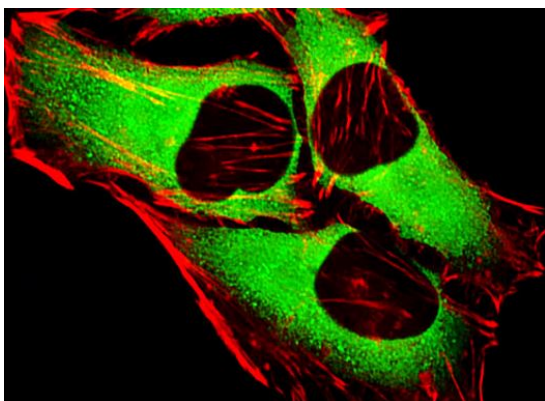
Properties

Form	Liquid
Purification	Purification with Protein A and immunogen peptide.
Buffer	PBS and 0.09% (W/V) Sodium azide
Preservative	0.09% (W/V) Sodium azide
Storage instruction	For continuous use, store undiluted antibody at 2-8°C for up to a week. For long-term storage, aliquot and store at -20°C or below. Storage in frost free freezers is not recommended. Avoid repeated freeze/thaw cycles. Suggest spin the vial prior to opening. The antibody solution should be gently mixed before use.
Note	For laboratory research only, not for drug, diagnostic or other use.

Bioinformation

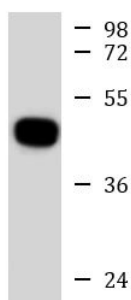
Database links	GeneID: 10491 Human Swiss-port # O75718 Human
Gene Symbol	CRTAP
Gene Full Name	cartilage associated protein
Background	The protein encoded by this gene is similar to the chicken and mouse CRTAP genes. The encoded protein is a scaffolding protein that may influence the activity of at least one member of the cytohesin/ARNO family in response to specific cellular stimuli. Defects in this gene are associated with osteogenesis imperfecta, a connective tissue disorder characterized by bone fragility and low bone mass. [provided by RefSeq, Jul 2008]
Function	Necessary for efficient 3-hydroxylation of fibrillar collagen prolyl residues. [UniProt]
Research Area	Signaling Transduction antibody
Calculated Mw	47 kDa
Cellular Localization	Secreted, extracellular space, extracellular matrix

Images



ARG55615 anti-CRTAP antibody ICC/IF image

Immunofluorescence: HeLa cells stained with ARG55615 anti-CRTAP antibody (green) at 1:25 dilution. Cytoplasmic actin was counterstained with Alexa Fluor® 555 conjugated with Phalloidin (red).



HT-1080

ARG55615 anti-CRTAP antibody WB image

Western blot: 35 µg of HT-1080 cell lysate stained with ARG55615 anti-CRTAP antibody at 1:1000 dilution.