

**ARG55629**  
**anti-CD34 antibody [581] (APC)**Package: 50 tests  
Store at: 4°C

### Summary

Product Description	APC-conjugated Mouse Monoclonal antibody [581] recognizes CD34
Tested Reactivity	Hu, NHuPrm
Tested Application	FACS
Specificity	This antibody reacts with CD34 (Mucosialin), a 110-115 kDa monomeric transmembrane phosphoglycoprotein expressed on hematopoietic progenitors cells and on the most pluripotent stem cells; it is gradually lost on progenitor cells. The antibody recognizes the class III CD34 epitope resistant to neuraminidase, chymopapain and glycoprotease.
Host	Mouse
Clonality	Monoclonal
Clone	581
Isotype	IgG1
Target Name	CD34
Species	Human
Conjugation	APC
Alternate Names	Hematopoietic progenitor cell antigen CD34; CD antigen CD34

### Application Instructions

Application table	Application	Dilution
	FACS	10 µl / 10 <sup>6</sup> cells
Application Note	* The dilutions indicate recommended starting dilutions and the optimal dilutions or concentrations should be determined by the scientist.	

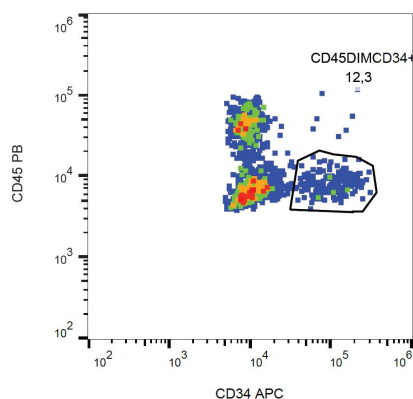
### Properties

Form	Liquid
Buffer	PBS and 15 mM Sodium azide
Preservative	15 mM Sodium azide
Storage instruction	Aliquot and store in the dark at 2-8°C. Keep protected from prolonged exposure to light. Avoid repeated freeze/thaw cycles. Suggest spin the vial prior to opening. The antibody solution should be gently mixed before use.
Note	For laboratory research only, not for drug, diagnostic or other use.

### Bioinformation

Database links	<a href="#">GeneID: 947 Human</a> <a href="#">Swiss-port # P28906 Human</a>
Gene Symbol	CD34
Gene Full Name	CD34 molecule
Background	CD34 protein may play a role in the attachment of stem cells to the bone marrow extracellular matrix or to stromal cells. This single-pass membrane protein is highly glycosylated and phosphorylated by protein kinase C. Two transcript variants encoding different isoforms have been found for this gene. [provided by RefSeq, Aug 2011]
Function	CD34 is a possible adhesion molecule with a role in early hematopoiesis by mediating the attachment of stem cells to the bone marrow extracellular matrix or directly to stromal cells. Could act as a scaffold for the attachment of lineage specific glycans, allowing stem cells to bind to lectins expressed by stromal cells or other marrow components. Presents carbohydrate ligands to selectins. [UniProt]
Research Area	Cancer antibody; Cell Biology and Cellular Response antibody; Controls and Markers antibody; Developmental Biology antibody; Immune System antibody; Neuroscience antibody; Pro-B Cell Marker antibody; Endothelial Cell Marker antibody; Angiogenesis Study antibody
Calculated Mw	41 kDa
PTM	Highly glycosylated. Phosphorylated on serine residues by PKC.

## Images



ARG55629 anti-CD34 antibody [581] (APC) FACS image

Flow Cytometry: Human peripheral blood stained with ARG55629 anti-CD34 antibody [581] (APC) and anti-CD45 antibody.