

ARG55646 anti-RAB11A / YL8 antibody

Package: 50 µl
Store at: -20°C

Summary

Product Description	Mouse Monoclonal antibody recognizes RAB11A / YL8
Tested Reactivity	Hu, Ms, Rat
Predict Reactivity	Chk, Dog, Sheep
Tested Application	IHC-P, WB
Host	Mouse
Clonality	Monoclonal
Clone	1565CT164.36.80
Isotype	IgG1, kappa
Target Name	RAB11A / YL8
Species	Human
Immunogen	Recombinant protein corresponding to aa. 1-216 of Human RAB11A.
Conjugation	Un-conjugated
Alternate Names	Rab-11; Ras-related protein Rab-11A; YL8

Application Instructions

Application table	Application	Dilution
	IHC-P	1:25
	WB	1:4000
Application Note	IHC-P: Antigen Retrieval: Heat mediation was performed in Citrate buffer (pH 6.0). * The dilutions indicate recommended starting dilutions and the optimal dilutions or concentrations should be determined by the scientist.	
Positive Control	HeLa	

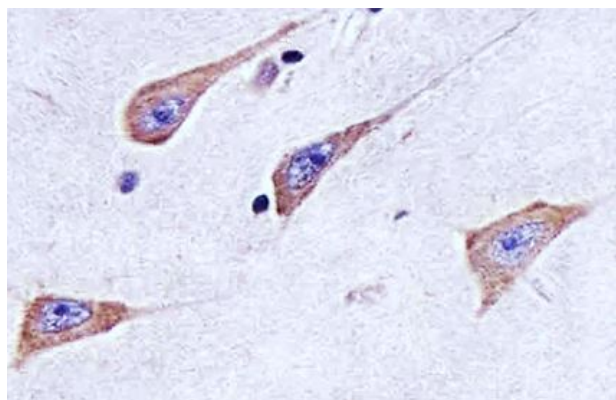
Properties

Form	Liquid
Purification	Purification with Protein G.
Buffer	PBS and 0.09% (W/V) Sodium azide.
Preservative	0.09% (W/V) Sodium azide
Storage instruction	For continuous use, store undiluted antibody at 2-8°C for up to a week. For long-term storage, aliquot and store at -20°C or below. Storage in frost free freezers is not recommended. Avoid repeated freeze/thaw cycles. Suggest spin the vial prior to opening. The antibody solution should be gently mixed before use.

Bioinformation

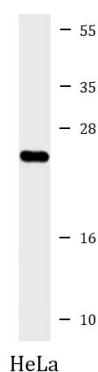
Gene Symbol	RAB11A
Gene Full Name	RAB11A, member RAS oncogene family
Background	The protein encoded by this gene belongs to the Rab family of the small GTPase superfamily. It is associated with both constitutive and regulated secretory pathways, and may be involved in protein transport. Two transcript variants encoding different isoforms have been found for this gene. [provided by RefSeq, May 2011]
Function	The small GTPases Rab are key regulators of intracellular membrane trafficking, from the formation of transport vesicles to their fusion with membranes. Rabs cycle between an inactive GDP-bound form and an active GTP-bound form that is able to recruit to membranes different set of downstream effectors directly responsible for vesicle formation, movement, tethering and fusion. That Rab regulates endocytic recycling. Acts as a major regulator of membrane delivery during cytokinesis. Together with MYO5B and RAB8A participates in epithelial cell polarization. Together with RAB31P, RAB8A, the exocyst complex, PARD3, PRKCI, ANXA2, CDC42 and DNMBP promotes transcytosis of PODXL to the apical membrane initiation sites (AMIS), apical surface formation and lumenogenesis. Together with MYO5B participates in CFTR trafficking to the plasma membrane and TF (Transferrin) recycling in nonpolarized cells. Required in a complex with MYO5B and RAB11FIP2 for the transport of NPC1L1 to the plasma membrane. Participates in the sorting and basolateral transport of CDH1 from the Golgi apparatus to the plasma membrane. Regulates the recycling of FCGRT (receptor of Fc region of monomeric Ig G) to basolateral membranes. May also play a role in melanosome transport and release from melanocytes. [UniProt]
Calculated Mw	24 kDa

Images



ARG55646 anti-RAB11A / YL8 antibody IHC-P image

Immunohistochemistry: Paraformaldehyde-fixed and paraffin-embedded Human brain tissue stained with ARG55646 anti-RAB11A / YL8 antibody at 1:25 dilution for 1 hour at 37°C. Tissue was blocked with 3% BSA for 0.5 hour at room temperature. Antigen Retrieval: Heat mediation was performed in Citrate buffer (pH 6.0).



ARG55646 anti-RAB11A / YL8 antibody WB image

Western blot: 20 µg of HeLa whole cell lysate stained with ARG55646 anti-RAB11A / YL8 antibody at 1:4000 dilution.