

**ARG55669**  
anti-HLA G antibodyPackage: 100 µl  
Store at: -20°C

### Summary

|                     |  |
|---------------------|--|
| Product Description | Mouse Monoclonal antibody recognizes HLA G   |
| Tested Reactivity   | Hu   |
| Tested Application  | WB   |
| Host                | Mouse  |
| Clonality           | Monoclonal   |
| Clone               | 800CT6.4.2   |
| Isotype             | IgG1   |
| Target Name         | HLA G  |
| Species             | Human  |
| Immunogen           | Purified His-tagged Human HLA-G.   |
| Conjugation         | Un-conjugated  |
| Alternate Names     | HLA G antigen; MHC class I antigen G; HLA class I histocompatibility antigen, alpha chain G; MHC-G |

### Application Instructions

|                   |  |          |
|-------------------|--|----------|
| Application table | Application  | Dilution |
|                   | WB   | 1:1000   |
| Application Note  | * The dilutions indicate recommended starting dilutions and the optimal dilutions or concentrations should be determined by the scientist. |          |
| Positive Control  | A549   |          |

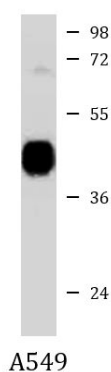
### Properties

|                     |  |
|---------------------|--|
| Form                | Liquid   |
| Purification        | Purification with Protein G.   |
| Buffer              | PBS and 0.09% (W/V) Sodium azide.  |
| Preservative        | 0.09% (W/V) Sodium azide.  |
| Storage instruction | For continuous use, store undiluted antibody at 2-8°C for up to a week. For long-term storage, aliquot and store at -20°C or below. Storage in frost free freezers is not recommended. Avoid repeated freeze/thaw cycles. Suggest spin the vial prior to opening. The antibody solution should be gently mixed before use. |
| Note                | For laboratory research only, not for drug, diagnostic or other use.   |

### Bioinformation

|                       |  |
|-----------------------|--|
| Database links        | <a href="#">GeneID: 3135 Human</a><br><a href="#">Swiss-port # P17693 Human</a>  |
| Gene Symbol           | HLA-G  |
| Gene Full Name        | major histocompatibility complex, class I, G   |
| Background            | HLA-G belongs to the HLA class I heavy chain paralogues. This class I molecule is a heterodimer consisting of a heavy chain and a light chain (beta-2 microglobulin). The heavy chain is anchored in the membrane. HLA-G is expressed on fetal derived placental cells. The heavy chain is approximately 45 kDa and its gene contains 8 exons. Exon one encodes the leader peptide, exons 2 and 3 encode the alpha1 and alpha2 domain, which both bind the peptide, exon 4 encodes the alpha3 domain, exon 5 encodes the transmembrane region, and exon 6 encodes the cytoplasmic tail. [provided by RefSeq, Jul 2008] |
| Function              | Involved in the presentation of foreign antigens to the immune system. Plays a role in maternal tolerance of the fetus by mediating protection from the deleterious effects of natural killer cells, cytotoxic T-lymphocytes, macrophages and mononuclear cells. [UniProt]   |
| Calculated Mw         | 38 kDa   |
| Cellular Localization | Membrane; Single-pass type I membrane protein  |

## Images



ARG55669 anti-HLA G antibody WB image

Western blot: 35 µg of A549 cell lysate stained with ARG55669 anti-HLA G antibody.