

ARG55676 anti-NDUFC2 antibody

Package: 100 µl
Store at: -20°C

Summary

Product Description	Rabbit Polyclonal antibody recognizes NDUFC2
Tested Reactivity	Hu
Tested Application	IHC-P, WB
Host	Rabbit
Clonality	Polyclonal
Isotype	IgG
Target Name	NDUFC2
Species	Human
Immunogen	KLH-conjugated synthetic peptide corresponding to aa. 90-119 (C-terminus) of Human NDUFC2.
Conjugation	Un-conjugated
Alternate Names	CI-B14.5b; B14.5b; NADH-ubiquinone oxidoreductase subunit B14.5b; NADHDH2; NADH dehydrogenase [ubiquinone] 1 subunit C2; HLC-1; Complex I-B14.5b; Human lung cancer oncogene 1 protein

Application Instructions

Application table	Application	Dilution
	IHC-P	1:50 - 1:100
	WB	1:1000
Application Note	* The dilutions indicate recommended starting dilutions and the optimal dilutions or concentrations should be determined by the scientist.	
Positive Control	HeLa	

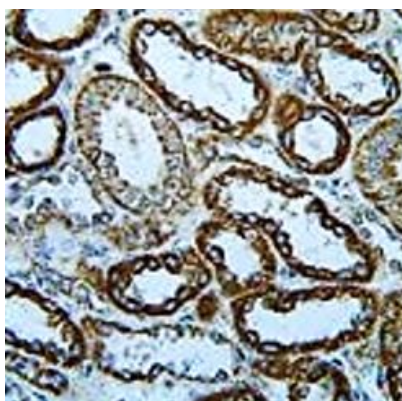
Properties

Form	Liquid
Purification	Purification with Protein A and immunogen peptide.
Buffer	PBS and 0.09% (W/V) Sodium azide.
Preservative	0.09% (W/V) Sodium azide.
Storage instruction	For continuous use, store undiluted antibody at 2-8°C for up to a week. For long-term storage, aliquot and store at -20°C or below. Storage in frost free freezers is not recommended. Avoid repeated freeze/thaw cycles. Suggest spin the vial prior to opening. The antibody solution should be gently mixed before use.
Note	For laboratory research only, not for drug, diagnostic or other use.

Bioinformation

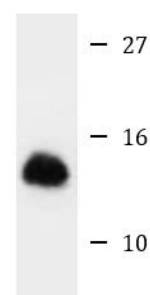
Database links	GeneID: 4718 Human Swiss-port # O95298 Human
Gene Symbol	NDUFC2
Gene Full Name	NADH dehydrogenase (ubiquinone) 1, subcomplex unknown, 2, 14.5kDa
Function	Accessory subunit of the mitochondrial membrane respiratory chain NADH dehydrogenase (Complex I), that is believed not to be involved in catalysis. Complex I functions in the transfer of electrons from NADH to the respiratory chain. The immediate electron acceptor for the enzyme is believed to be ubiquinone. [UniProt]
Calculated Mw	14 kDa
Cellular Localization	Mitochondrion inner membrane; Single-pass membrane protein; Matrix side

Images



ARG55676 anti-NDUFC2 antibody IHC-P image

Immunohistochemistry: Formalin-fixed and paraffin-embedded Human kidney tissue stained with ARG55676 anti-NDUFC2 antibody.



HeLa

ARG55676 anti-NDUFC2 antibody WB image

Western blot: 35 µg of HeLa cell lysate stained with ARG55676 anti-NDUFC2 antibody.