

ARG55688 anti-MDH2 antibody

Package: 100 µl
Store at: -20°C

Summary

Product Description	Rabbit Polyclonal antibody recognizes MDH2
Tested Reactivity	Hu, Ms
Predict Reactivity	Bov, Rat, Mk, Pig, Yeast
Tested Application	FACS, IHC-P, WB
Host	Rabbit
Clonality	Polyclonal
Isotype	IgG
Target Name	MDH2
Species	Human
Immunogen	KLH-conjugated synthetic peptide corresponding to aa. 86-115 (Center) of Human MDH2.
Conjugation	Un-conjugated
Alternate Names	MDH; MOR1; MGC:3559; Malate dehydrogenase, mitochondrial; EC 1.1.1.37; M-MDH

Application Instructions

Application table	Application	Dilution
	FACS	1:10 - 1:50
	IHC-P	1:10 - 1:50
	WB	1:1000
Application Note	* The dilutions indicate recommended starting dilutions and the optimal dilutions or concentrations should be determined by the scientist.	
Positive Control	HeLa	

Properties

Form	Liquid
Purification	This antibody is prepared by Saturated Ammonium Sulfate (SAS) precipitation followed by dialysis against PBS.
Buffer	PBS and 0.09% (W/V) Sodium azide.
Preservative	0.09% (W/V) Sodium azide.
Storage instruction	For continuous use, store undiluted antibody at 2-8°C for up to a week. For long-term storage, aliquot and store at -20°C or below. Storage in frost free freezers is not recommended. Avoid repeated freeze/thaw cycles. Suggest spin the vial prior to opening. The antibody solution should be gently mixed before use.

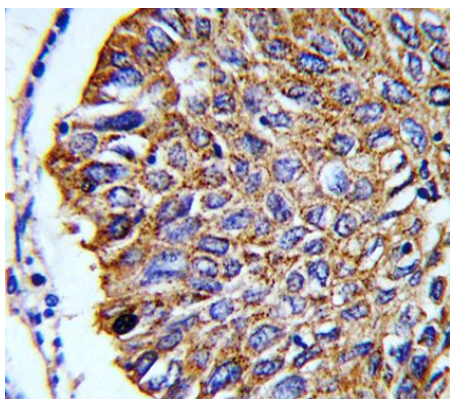
Note

For laboratory research only, not for drug, diagnostic or other use.

Bioinformation

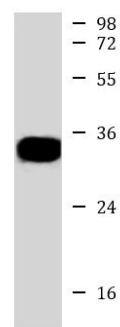
Database links	GeneID: 17448 Mouse GeneID: 4191 Human Swiss-port # P08249 Mouse Swiss-port # P40926 Human
Gene Symbol	MDH2
Gene Full Name	malate dehydrogenase 2, NAD (mitochondrial)
Background	Malate dehydrogenase catalyzes the reversible oxidation of malate to oxaloacetate, utilizing the NAD/NADH cofactor system in the citric acid cycle. The protein encoded by this gene is localized to the mitochondria and may play pivotal roles in the malate-aspartate shuttle that operates in the metabolic coordination between cytosol and mitochondria. Several transcript variants encoding different isoforms have been found for this gene. [provided by RefSeq, Sep 2013]
Calculated Mw	36 kDa
PTM	Acetylation is enhanced by up to 67% after treatment either with trichostin A (TSA) or with nicotinamide (NAM) with the appearance of tri- and tetraacetylations. Glucose also increases acetylation by about 60%.
Cellular Localization	Mitochondrion matrix.

Images



ARG55688 anti-MDH2 antibody IHC-P image

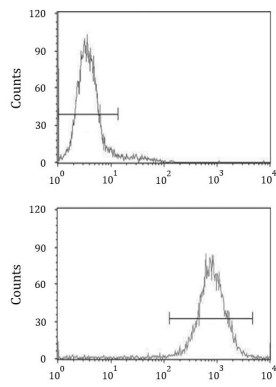
Immunohistochemistry: Formalin-fixed and paraffin-embedded Human lung carcinoma stained with ARG55688 anti-MDH2 antibody.



HeLa

ARG55688 anti-MDH2 antibody WB image

Western blot: 35 µg of HeLa cell lysate stained with ARG55688 anti-MDH2 antibody.



ARG55688 anti-MDH2 antibody FACS image

Flow Cytometry: K562 cells stained with ARG55688 anti-MDH2 antibody (bottom histogram) or without primary antibody as control (top histogram), followed by incubation with FITC labelled secondary antibody.