

ARG55693 anti-EN1 / Engrailed 1 antibody

Package: 100 µl
Store at: -20°C

Summary

Product Description	Rabbit Polyclonal antibody recognizes EN1 / Engrailed 1
Tested Reactivity	Hu
Tested Application	ICC/IF, IHC-P, WB
Host	Rabbit
Clonality	Polyclonal
Isotype	IgG
Target Name	EN1 / Engrailed 1
Species	Human
Immunogen	KLH-conjugated synthetic peptide corresponding to aa. 1-30 (N-terminus) of Human EN1 / Engrailed 1.
Conjugation	Un-conjugated
Alternate Names	Homeobox protein en-1; Homeobox protein engrailed-1; Hu-En-1

Application Instructions

Application table	Application	Dilution
	ICC/IF	1:10 - 1:50
	IHC-P	1:10 - 1:50
	WB	1:1000
Application Note	* The dilutions indicate recommended starting dilutions and the optimal dilutions or concentrations should be determined by the scientist.	
Positive Control	NCI-H460	

Properties

Form	Liquid
Purification	Purification with Protein A and immunogen peptide.
Buffer	PBS and 0.09% (W/V) Sodium azide.
Preservative	0.09% (W/V) Sodium azide.
Storage instruction	For continuous use, store undiluted antibody at 2-8°C for up to a week. For long-term storage, aliquot and store at -20°C or below. Storage in frost free freezers is not recommended. Avoid repeated freeze/thaw cycles. Suggest spin the vial prior to opening. The antibody solution should be gently mixed before use.
Note	For laboratory research only, not for drug, diagnostic or other use.

Bioinformation

Database links [GeneID: 2019 Human](#)
[Swiss-port # Q05925 Human](#)

Gene Symbol EN1

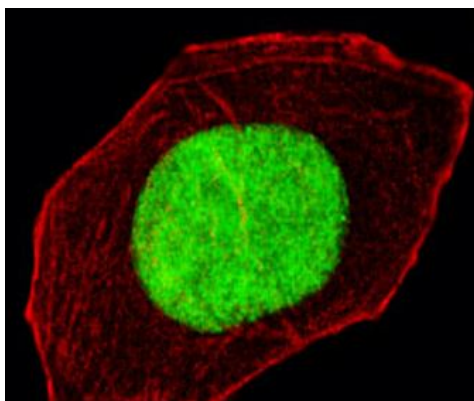
Gene Full Name engrailed homeobox 1

Background Homeobox-containing genes are thought to have a role in controlling development. In *Drosophila*, the 'engrailed' (en) gene plays an important role during development in segmentation, where it is required for the formation of posterior compartments. Different mutations in the mouse homologs, En1 and En2, produced different developmental defects that frequently are lethal. The human engrailed homologs 1 and 2 encode homeodomain-containing proteins and have been implicated in the control of pattern formation during development of the central nervous system. [provided by RefSeq, Jul 2008]

Calculated Mw 40 kDa

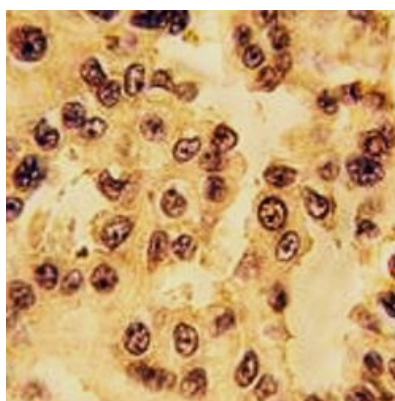
Cellular Localization Nucleus.

Images



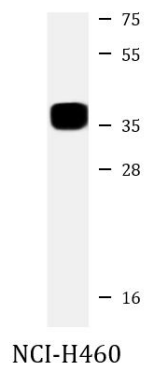
ARG55693 anti-EN1 / Engrailed 1 antibody ICC/IF image

Immunofluorescence: U251 cells were fixed with 4% PFA (20 min), permeabilized with Triton X-100 (0.1%, 10 min), then stained with ARG55693 anti-EN1 / Engrailed 1 antibody (green) at 1:25 dilution, 1 hour at 37°C. Cytoplasmic actin was counterstained with Alexa Fluor® 555 (red) conjugated Phalloidin (7 units/ml, 1 hour at 37°C).



ARG55693 anti-EN1 / Engrailed 1 antibody IHC-P image

Immunohistochemistry: Formalin-fixed and paraffin-embedded Human lung carcinoma tissue stained with ARG55693 anti-EN1 / Engrailed 1 antibody.



ARG55693 anti-EN1 / Engrailed 1 antibody WB image

Western blot: 20 µg of NCI-H460 whole cell lysate stained with ARG55693 anti-EN1 / Engrailed 1 antibody at 1:2000 dilution.