

## ARG55694 anti-ROR1 antibody

Package: 100 µl  
Store at: -20°C

### Summary

Product Description	Rabbit Polyclonal antibody recognizes ROR1
Tested Reactivity	Hu, Ms
Tested Application	FACS, IHC-P, WB
Host	Rabbit
Clonality	Polyclonal
Isotype	IgG
Target Name	ROR1
Species	Human
Immunogen	Recombinant protein corresponding to aa. 112-399 of Human ROR1.
Conjugation	Un-conjugated
Alternate Names	Tyrosine-protein kinase transmembrane receptor ROR1; Neurotrophic tyrosine kinase, receptor-related 1; EC 2.7.10.1; NTRKR1; dJ537F10.1

### Application Instructions

Application table	Application	Dilution
	FACS	1:10 - 1:50
	IHC-P	1:10 - 1:50
	WB	1:1000
Application Note	* The dilutions indicate recommended starting dilutions and the optimal dilutions or concentrations should be determined by the scientist.	
Positive Control	K562	

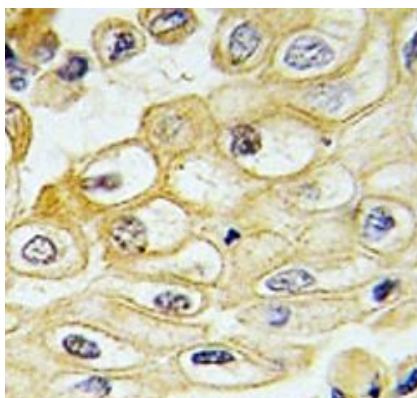
### Properties

Form	Liquid
Purification	This antibody is prepared by Saturated Ammonium Sulfate (SAS) precipitation followed by dialysis against PBS.
Buffer	PBS and 0.09% (W/V) Sodium azide.
Preservative	0.09% (W/V) Sodium azide.
Storage instruction	For continuous use, store undiluted antibody at 2-8°C for up to a week. For long-term storage, aliquot and store at -20°C or below. Storage in frost free freezers is not recommended. Avoid repeated freeze/thaw cycles. Suggest spin the vial prior to opening. The antibody solution should be gently mixed before use.
Note	For laboratory research only, not for drug, diagnostic or other use.

## Bioinformation

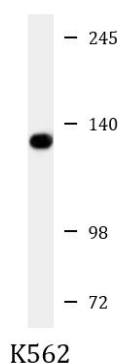
Database links	<a href="#">GeneID: 26563 Mouse</a> <a href="#">GeneID: 4919 Human</a> <a href="#">Swiss-port # Q01973 Human</a> <a href="#">Swiss-port # Q9Z139 Mouse</a>
Gene Symbol	ROR1
Gene Full Name	receptor tyrosine kinase-like orphan receptor 1
Background	This gene encodes a receptor tyrosine kinase-like orphan receptor that modulates neurite growth in the central nervous system. The encoded protein is a glycosylated type I membrane protein that belongs to the ROR subfamily of cell surface receptors. It is a pseudokinase that lacks catalytic activity and may interact with the non-canonical Wnt signalling pathway. This gene is highly expressed during early embryonic development but expressed at very low levels in adult tissues. Increased expression of this gene is associated with B-cell chronic lymphocytic leukaemia. Alternative splicing results in multiple transcript variants encoding different isoforms. [provided by RefSeq, Jun 2012]
Function	Tyrosine-protein kinase receptor whose role is not yet clear. [UniProt]
Calculated Mw	104 kDa
Cellular Localization	Membrane; Single-pass type I membrane protein

## Images



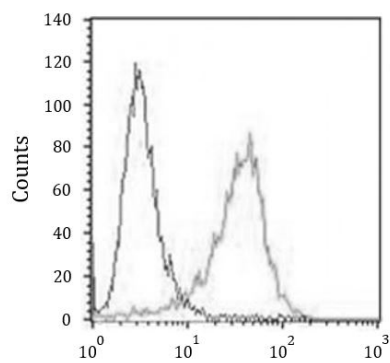
ARG55694 anti-ROR1 antibody IHC-P image

Immunohistochemistry: Formalin-fixed and paraffin-embedded Human lung carcinoma tissue stained with ARG55694 anti-ROR1 antibody.



ARG55694 anti-ROR1 antibody WB image

Western blot: 20 µg of K562 cell lysate stained with ARG55694 anti-ROR1 antibody at 1:2000 dilution.



#### ARG55694 anti-ROR1 antibody FACS image

Flow Cytometry: A549 cells stained with ARG55694 anti-ROR1 antibody (right histogram) at 1:25 dilution or isotype control antibody (left histogram), followed by incubation with Alexa Fluor® 488 labelled secondary antibody.