

## ARG55695 anti-N-Ras antibody

Package: 100 µl  
Store at: -20°C

### Summary

Product Description	Rabbit Polyclonal antibody recognizes N-Ras
Tested Reactivity	Hu
Predict Reactivity	Pig
Tested Application	FACS, IHC-P, WB
Host	Rabbit
Clonality	Polyclonal
Isotype	IgG
Target Name	N-Ras
Species	Human
Immunogen	KLH-conjugated synthetic peptide corresponding to aa. 147-179 (C-terminus) of Human N-Ras.
Conjugation	Un-conjugated
Alternate Names	GTPase NRas; N-ras; NRAS1; CMNS; Transforming protein N-Ras; NCMS; ALPS4; NS6

### Application Instructions

Application table	Application	Dilution
	FACS	1:10 - 1:50
	IHC-P	1:10 - 1:50
	WB	1:1000
Application Note	* The dilutions indicate recommended starting dilutions and the optimal dilutions or concentrations should be determined by the scientist.	
Positive Control	MCF7	

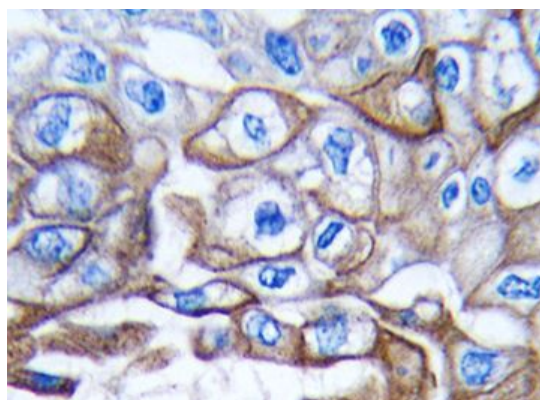
### Properties

Form	Liquid
Purification	This antibody is prepared by Saturated Ammonium Sulfate (SAS) precipitation followed by dialysis against PBS.
Buffer	PBS and 0.09% (W/V) Sodium azide.
Preservative	0.09% (W/V) Sodium azide.
Storage instruction	For continuous use, store undiluted antibody at 2-8°C for up to a week. For long-term storage, aliquot and store at -20°C or below. Storage in frost free freezers is not recommended. Avoid repeated freeze/thaw cycles. Suggest spin the vial prior to opening. The antibody solution should be gently mixed before use.

## Bioinformation

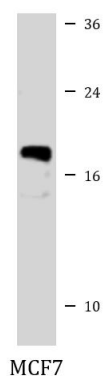
Database links	<a href="#">GeneID: 4893 Human</a> <a href="#">Swiss-port # P01111 Human</a>
Gene Symbol	NRAS
Gene Full Name	neuroblastoma RAS viral (v-ras) oncogene homolog
Background	This is an N-ras oncogene encoding a membrane protein that shuttles between the Golgi apparatus and the plasma membrane. This shuttling is regulated through palmitoylation and depalmitoylation by the ZDHHC9-GOLGA7 complex. The encoded protein, which has intrinsic GTPase activity, is activated by a guanine nucleotide-exchange factor and inactivated by a GTPase activating protein. Mutations in this gene have been associated with somatic rectal cancer, follicular thyroid cancer, autoimmune lymphoproliferative syndrome, Noonan syndrome, and juvenile myelomonocytic leukemia. [provided by RefSeq, Jun 2011]
Function	Ras proteins bind GDP/GTP and possess intrinsic GTPase activity. [UniProt]
Calculated Mw	21 kDa
PTM	Palmitoylated by the ZDHHC9-GOLGA7 complex. A continuous cycle of de- and re-palmitoylation regulates rapid exchange between plasma membrane and Golgi. Acetylation at Lys-104 prevents interaction with guanine nucleotide exchange factors (GEFs).
Cellular Localization	Cell membrane; Lipid-anchor; Cytoplasmic side. Golgi apparatus membrane; Lipid-anchor. Note=Shuttles between the plasma membrane and the Golgi apparatus

## Images



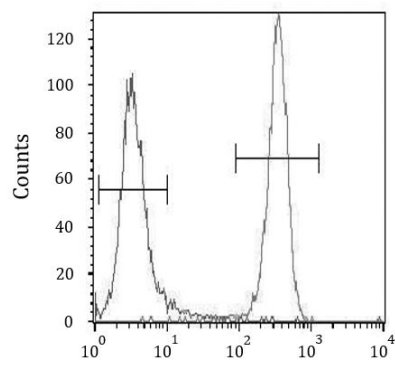
ARG55695 anti-N-Ras antibody IHC-P image

Immunohistochemistry: Formalin-fixed and paraffin-embedded Human lung carcinoma tissue stained with ARG55695 anti-N-Ras antibody.



ARG55695 anti-N-Ras antibody WB image

Western blot: 35 µg of MCF7 cell lysate stained with ARG55695 anti-N-Ras antibody.



#### ARG55695 anti-N-Ras antibody FACS image

Flow Cytometry: NCI-H460 cells stained with ARG55695 anti-N-Ras antibody (right histogram) or without primary antibody as control (left histogram), followed by incubation with FITC labelled secondary antibody.