

ARG55702 anti-PITPN / PITP alpha antibody

Package: 100 µl
Store at: -20°C

Summary

Product Description	Rabbit Polyclonal antibody recognizes PITPN / PITP alpha
Tested Reactivity	Hu, Ms, Rat
Predict Reactivity	Bov, Rb
Tested Application	WB
Host	Rabbit
Clonality	Polyclonal
Isotype	IgG
Target Name	PITPN / PITP alpha
Species	Human
Immunogen	KLH-conjugated synthetic peptide corresponding to aa. 243-270 (C-terminus) of Human PITPN / PITP alpha.
Conjugation	Un-conjugated
Alternate Names	PI-TPalpha; PITPN; VIB1A; HEL-S-36; PtdIns transfer protein alpha; PI-TP-alpha; PtdInsTP alpha; Phosphatidylinositol transfer protein alpha isoform

Application Instructions

Application table	Application	Dilution
	WB	1:1000
Application Note	* The dilutions indicate recommended starting dilutions and the optimal dilutions or concentrations should be determined by the scientist.	
Positive Control	293	

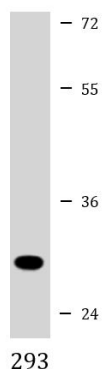
Properties

Form	Liquid
Purification	Purification with Protein A and immunogen peptide.
Buffer	PBS and 0.09% (W/V) Sodium azide.
Preservative	0.09% (W/V) Sodium azide.
Storage instruction	For continuous use, store undiluted antibody at 2-8°C for up to a week. For long-term storage, aliquot and store at -20°C or below. Storage in frost free freezers is not recommended. Avoid repeated freeze/thaw cycles. Suggest spin the vial prior to opening. The antibody solution should be gently mixed before use.
Note	For laboratory research only, not for drug, diagnostic or other use.

Bioinformation

Gene Symbol	PITPNA
Gene Full Name	phosphatidylinositol transfer protein, alpha
Background	This gene encodes a member of a family of lipid-binding proteins that transfer molecules of phosphatidylinositol or phosphatidylcholine between membrane surfaces. The protein is implicated in phospholipase C signaling and in the production of phosphatidylinositol 3,4,5-trisphosphate (PIP3) by phosphoinositide-3-kinase.[provided by RefSeq, Sep 2009]
Function	Catalyzes the transfer of PtdIns and phosphatidylcholine between membranes. [UniProt]
Calculated Mw	32 kDa
Cellular Localization	Cytoplasm.

Images



ARG55702 anti-PITPN / PITP alpha antibody WB image

Western blot: 35 µg of 293 cell lysate stained with ARG55702 anti-PITPN / PITP alpha antibody.