

## ARG55703 anti-PDCL antibody

Package: 100 µl  
Store at: -20°C

### Summary

Product Description	Rabbit Polyclonal antibody recognizes PDCL
Tested Reactivity	Hu
Tested Application	IHC-P, WB
Host	Rabbit
Clonality	Polyclonal
Isotype	IgG
Target Name	PDCL
Species	Human
Immunogen	KLH-conjugated synthetic peptide corresponding to aa. 1-30 (N-terminus) of Human PDCL.
Conjugation	Un-conjugated
Alternate Names	PhLP; PHLP; Phosducin-like protein

### Application Instructions

Application table	Application	Dilution
	IHC-P	1:25
	WB	1:1000
Application Note	* The dilutions indicate recommended starting dilutions and the optimal dilutions or concentrations should be determined by the scientist.	
Positive Control	HeLa	

### Properties

Form	Liquid
Purification	Purification with Protein A and immunogen peptide.
Buffer	PBS and 0.09% (W/V) sodium azide.
Preservative	0.09% (W/V) sodium azide.
Storage instruction	For continuous use, store undiluted antibody at 2-8°C for up to a week. For long-term storage, aliquot and store at -20°C or below. Storage in frost free freezers is not recommended. Avoid repeated freeze/thaw cycles. Suggest spin the vial prior to opening. The antibody solution should be gently mixed before use.
Note	For laboratory research only, not for drug, diagnostic or other use.

### Bioinformation

Database links

[GeneID: 5082 Human](#)

[Swiss-port # Q13371 Human](#)

Gene Symbol

PDCL

Gene Full Name

phosducin-like

Background

Phosducin-like protein is a putative modulator of heterotrimeric G proteins. The protein shares extensive amino acid sequence homology with phosducin, a phosphoprotein expressed in retina and pineal gland. Both phosducin-like protein and phosphoducin have been shown to regulate G-protein signaling by binding to the beta-gamma subunits of G proteins. [provided by RefSeq, Jul 2008]

Function

Isoform 1: Functions as a co-chaperone for CCT in the assembly of heterotrimeric G protein complexes, facilitates the assembly of both Gbeta-Ggamma and RGS-Gbeta5 heterodimers.

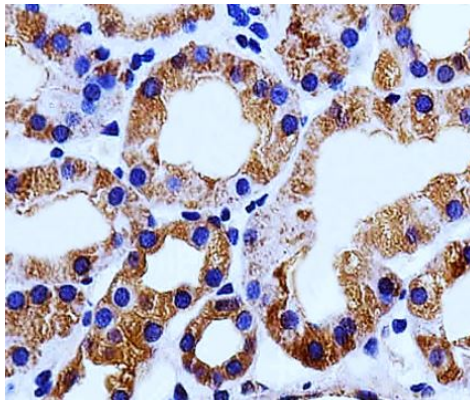
Isoform 2: Acts as a negative regulator of heterotrimeric G proteins assembly by trapping the preloaded G beta subunits inside the CCT chaperonin. [UniProt]

Calculated Mw

34 kDa

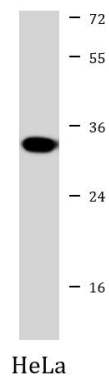
## Images

---



ARG55703 anti-PDCL antibody IHC-P image

Immunohistochemistry: Paraffin-embedded Human kidney tissue stained with ARG55703 anti-PDCL antibody at 1:25 dilution.



ARG55703 anti-PDCL antibody WB image

Western blot: 35 µg of HeLa cell lysate stained with ARG55703 anti-PDCL antibody at 1:1000 dilution.