

ARG55707 anti-CD10 antibody

Package: 100 µl
Store at: -20°C

Summary

Product Description	Rabbit Polyclonal antibody recognizes CD10
Tested Reactivity	Hu, Ms, Rat
Tested Application	IHC-P, WB
Host	Rabbit
Clonality	Polyclonal
Isotype	IgG
Target Name	CD10
Species	Human
Immunogen	KLH-conjugated synthetic peptide corresponding to aa. 492-525 (Center) of Human CD10.
Conjugation	Un-conjugated
Alternate Names	Enkephalinase; Neutral endopeptidase; Neutral endopeptidase 24.11; Common acute lymphocytic leukemia antigen; Neprilysin; CD antigen CD10; CALLA; EC 3.4.24.11; CD10; Skin fibroblast elastase; SFE; Atriopeptidase; NEP

Application Instructions

Application table	Application	Dilution
	IHC-P	1:25
	WB	1:1000
Application Note	* The dilutions indicate recommended starting dilutions and the optimal dilutions or concentrations should be determined by the scientist.	
Positive Control	LNCaP	

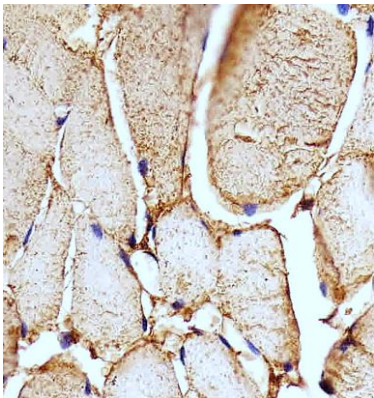
Properties

Form	Liquid
Purification	Purification with Protein A and immunogen peptide.
Buffer	PBS and 0.09% (W/V) sodium azide.
Preservative	0.09% (W/V) sodium azide.
Storage instruction	For continuous use, store undiluted antibody at 2-8°C for up to a week. For long-term storage, aliquot and store at -20°C or below. Storage in frost free freezers is not recommended. Avoid repeated freeze/thaw cycles. Suggest spin the vial prior to opening. The antibody solution should be gently mixed before use.
Note	For laboratory research only, not for drug, diagnostic or other use.

Bioinformation

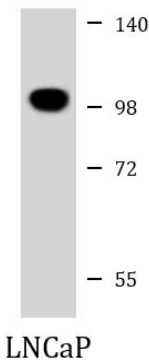
Gene Symbol	MME
Gene Full Name	membrane metallo-endorpeptidase
Background	CD10 is a type II transmembrane glycoprotein and a common acute lymphocytic leukemia antigen that is an important cell surface marker in the diagnosis of human acute lymphocytic leukemia (ALL). The encoded protein is present on leukemic cells of pre-B phenotype, which represent 85% of cases of ALL. This protein is not restricted to leukemic cells, however, and is found on a variety of normal tissues. The protein is a neutral endopeptidase that cleaves peptides at the amino side of hydrophobic residues and inactivates several peptide hormones including glucagon, enkephalins, substance P, neurotensin, oxytocin, and bradykinin. [provided by RefSeq, Aug 2017]
Function	CD10: Thermolysin-like specificity, but is almost confined on acting on polypeptides of up to 30 amino acids (PubMed:15283675, PubMed:8168535). Biologically important in the destruction of opioid peptides such as Met- and Leu-enkephalins by cleavage of a Gly-Phe bond (PubMed:17101991). Able to cleave angiotensin-1, angiotensin-2 and angiotensin 1-9 (PubMed:15283675). Involved in the degradation of atrial natriuretic factor (ANF) (PubMed:2531377, PubMed:2972276). Displays UV-inducible elastase activity toward skin preelastic and elastic fibers (PubMed:20876573). [UniProt]
Calculated Mw	86 kDa
PTM	Myristoylation is a determinant of membrane targeting. Glycosylation at Asn-628 is necessary both for surface expression and neutral endopeptidase activity.
Cellular Localization	Cell membrane; Single-pass type II membrane protein

Images



ARG55707 anti-CD10 antibody IHC-P image

Immunohistochemistry: Paraffin-embedded Human skeletal muscle tissue stained with ARG55707 anti-CD10 antibody at 1:25 dilution.



ARG55707 anti-CD10 antibody WB image

Western blot: 35 µg of LNCaP cell lysate stained with ARG55707 anti-CD10 antibody at 1:1000 dilution.