

ARG55716 anti-MTTP antibody

Package: 100 µl
Store at: -20°C

Summary

Product Description	Rabbit Polyclonal antibody recognizes MTTP
Tested Reactivity	Hu
Tested Application	FACS, WB
Host	Rabbit
Clonality	Polyclonal
Isotype	IgG
Target Name	MTTP
Species	Human
Immunogen	KLH-conjugated synthetic peptide corresponding to aa. 878-911 (C-terminus) of Human MTTP.
Conjugation	Un-conjugated
Alternate Names	Microsomal triglyceride transfer protein large subunit; MTP; ABL

Application Instructions

Application table	Application	Dilution
	FACS	1:25
	WB	1:1000
Application Note	* The dilutions indicate recommended starting dilutions and the optimal dilutions or concentrations should be determined by the scientist.	
Positive Control	Human liver	

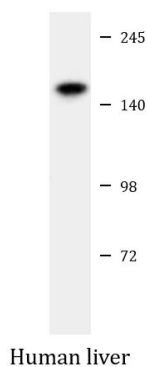
Properties

Form	Liquid
Purification	Purification with Protein A and immunogen peptide.
Buffer	PBS and 0.09% (W/V) sodium azide.
Preservative	0.09% (W/V) sodium azide.
Storage instruction	For continuous use, store undiluted antibody at 2-8°C for up to a week. For long-term storage, aliquot and store at -20°C or below. Storage in frost free freezers is not recommended. Avoid repeated freeze/thaw cycles. Suggest spin the vial prior to opening. The antibody solution should be gently mixed before use.
Note	For laboratory research only, not for drug, diagnostic or other use.

Bioinformation

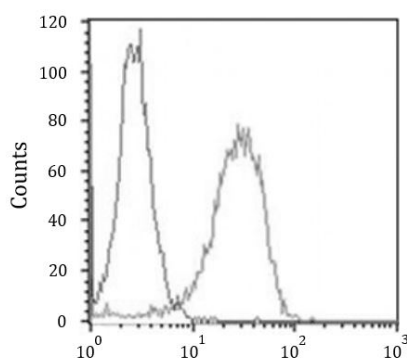
Database links	GeneID: 4547 Human Swiss-port # P55157 Human
Gene Symbol	MTTP
Gene Full Name	microsomal triglyceride transfer protein
Background	MTP encodes the large subunit of the heterodimeric microsomal triglyceride transfer protein. Protein disulfide isomerase (PDI) completes the heterodimeric microsomal triglyceride transfer protein, which has been shown to play a central role in lipoprotein assembly. Mutations in MTP can cause abetalipoproteinemia. [provided by RefSeq, Jul 2008]
Function	Catalyzes the transport of triglyceride, cholesteryl ester, and phospholipid between phospholipid surfaces. Required for the secretion of plasma lipoproteins that contain apolipoprotein B. [UniProt]
Calculated Mw	99 kDa
Cellular Localization	Endoplasmic reticulum.

Images



ARG55716 anti-MTTP antibody WB image

Western blot: 20 µg of Human liver lysate stained with ARG55716 anti-MTTP antibody at 1:1000 dilution.



ARG55716 anti-MTTP antibody FACS image

Flow Cytometry: HeLa cells stained with ARG55716 anti-MTTP antibody (right histogram) at 1:25 dilution or isotype control antibody (left histogram), followed by incubation with Alexa Fluor® 488 labelled secondary antibody.