

## ARG55718 anti-CTRP5 antibody

Package: 50 µg  
Store at: -20°C

### Summary

Product Description	Rabbit Polyclonal antibody recognizes CTRP5
Tested Reactivity	Hu
Predict Reactivity	Rat
Tested Application	IHC-P, WB
Specificity	These proteins are often highly modified post-translationally and migrate in SDS-PAGE at positions other than their predicted size.
Host	Rabbit
Clonality	Polyclonal
Isotype	IgG
Target Name	CTRP5
Species	Human
Immunogen	Synthetic peptide (15 aa) within aa. 30-80 of Human CTRP5.
Conjugation	Un-conjugated
Alternate Names	CTRP5; Complement C1q tumor necrosis factor-related protein 5

### Application Instructions

Application table	Application	Dilution
	IHC-P	10 µg/ml
	WB	1 - 4 µg/ml
Application Note	* The dilutions indicate recommended starting dilutions and the optimal dilutions or concentrations should be determined by the scientist.	
Positive Control	Human Brain Tissue Lysate	

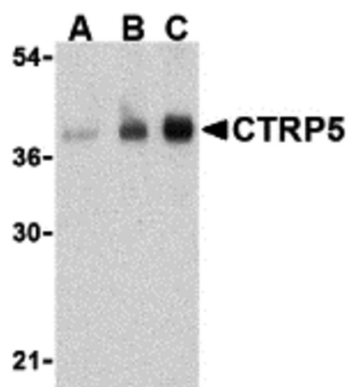
### Properties

Form	Liquid
Purification	Affinity purification with immunogen.
Buffer	PBS and 0.02% Sodium azide
Preservative	0.02% Sodium azide
Concentration	1 mg/ml
Storage instruction	For continuous use, store undiluted antibody at 2-8°C for up to a week. For long-term storage, aliquot and store at -20°C or below. Storage in frost free freezers is not recommended. Avoid repeated freeze/thaw cycles. Suggest spin the vial prior to opening. The antibody solution should be gently mixed before use.

## Bioinformation

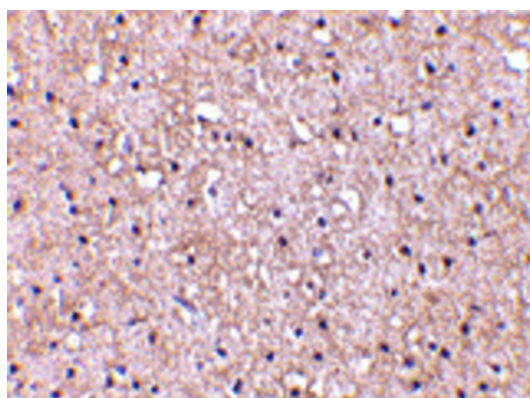
Database links	<a href="#">GeneID: 114902 Human</a> <a href="#">Swiss-port # Q9BXJ0 Human</a>
Gene Symbol	C1QTNF5
Gene Full Name	C1q and tumor necrosis factor related protein 5
Background	This gene encodes a member of a family of proteins that function as components of basement membranes and may play a role in cell adhesion. Mutations in this gene have been associated with late-onset retinal degeneration. The protein may be encoded by either a bicistronic transcript including sequence from the upstream membrane frizzled-related protein gene (MFRP), or by a monocistronic transcript expressed from an internal promoter. [provided by RefSeq, Jun 2013]
Calculated Mw	25 kDa

## Images



ARG55718 anti-CTRP5 antibody WB image

Western blot: Human brain cell lysate stained with ARG55718 anti-CTRP5 antibody at (A) 1, (B) 2, and (C) 4 µg/ml dilution.



ARG55718 anti-CTRP5 antibody IHC-P image

Immunohistochemistry: Human brain tissue stained with ARG55718 anti-CTRP5 antibody at 10 µg/ml dilution.