

ARG55719 anti-NSMCE2 / NSE2 antibody

Package: 50 µg
Store at: -20°C

Summary

Product Description	Rabbit Polyclonal antibody recognizes NSMCE2 / NSE2
Tested Reactivity	Hu
Predict Reactivity	Ms, Rat
Tested Application	WB
Host	Rabbit
Clonality	Polyclonal
Isotype	IgG
Target Name	NSMCE2 / NSE2
Immunogen	Synthetic peptide (15 aa) within aa. 170-220 of Human NSMCE2 / NSE2.
Conjugation	Un-conjugated
Alternate Names	hMMS21; E3 SUMO-protein ligase NSE2; EC 6.3.2.-; NSE2; MMS21; Non-SMC element 2 homolog; C8orf36; Non-structural maintenance of chromosomes element 2 homolog; MMS21 homolog; ZMIZ7

Application Instructions

Application table	<table> <tr> <th>Application</th><th>Dilution</th></tr> <tr> <td>WB</td><td>0.5 - 1 µg/ml</td></tr> </table>	Application	Dilution	WB	0.5 - 1 µg/ml
Application	Dilution				
WB	0.5 - 1 µg/ml				
Application Note	* The dilutions indicate recommended starting dilutions and the optimal dilutions or concentrations should be determined by the scientist.				
Positive Control	293 cell lysate				

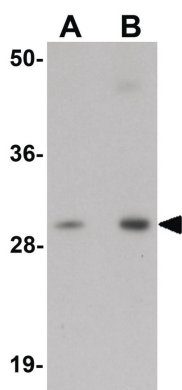
Properties

Form	Liquid
Purification	Affinity purification with immunogen.
Buffer	PBS and 0.02% Sodium azide
Preservative	0.02% Sodium azide
Concentration	1 mg/ml
Storage instruction	For continuous use, store undiluted antibody at 2-8°C for up to 1-2 weeks. For long-term storage, aliquot and store at -20°C or below. Storage in frost free freezers is not recommended. Avoid repeated freeze/thaw cycles. The antibody solution should be gently mixed before use.
Note	For laboratory research only, not for drug, diagnostic or other use.

Bioinformation

Database links	GeneID: 286053 Human Swiss-port # Q96MF7 Human
Gene Symbol	NSMCE2
Gene Full Name	NSE2/MMS21 homolog, SMC5-SMC6 complex SUMO ligase
Function	E3 SUMO-protein ligase component of the SMC5-SMC6 complex, a complex involved in DNA double-strand break repair by homologous recombination. Is not be required for the stability of the complex. The complex may promote sister chromatid homologous recombination by recruiting the SMC1-SMC3 cohesin complex to double-strand breaks. The complex is required for telomere maintenance via recombination in ALT (alternative lengthening of telomeres) cell lines and mediates sumoylation of shelterin complex (telosome) components which is proposed to lead to shelterin complex disassembly in ALT-associated PML bodies (APBs). Acts as a E3 ligase mediating SUMO attachment to various proteins such as SMC6L1 and TRAX, the shelterin complex subunits TERF1, TERF2, TINF2 and TERF2IP, and maybe the cohesin components RAD21 and STAG2. Required for recruitment of telomeres to PML nuclear bodies. SUMO protein-ligase activity is required for the prevention of DNA damage-induced apoptosis by facilitating DNA repair, and for formation of APBs in ALT cell lines. Required for sister chromatid cohesion during prometaphase and mitotic progression. [UniProt]
Calculated Mw	28 kDa
PTM	Sumoylated, possibly via autosumoylation.

Images



ARG55719 anti-NSMCE2 / NSE2 antibody WB image

Western blot: 293 cell lysate stained with ARG55719 anti-NSMCE2 / NSE2 antibody at (A) 0.5 and (B) 1 µg/ml dilution.