

ARG55725 anti-Cre antibody

Package: 100 µg
Store at: -20°C

Summary

Product Description	Goat Polyclonal antibody recognizes Cre
Tested Reactivity	Other
Tested Application	WB
Specificity	In 293HEK cells transduced with Ad-Cre detects a band of 38 kDa by Western blot and gives a positive signal for the Cre recombinase protein.
Host	Goat
Clonality	Polyclonal
Isotype	IgG
Target Name	Cre
Immunogen	Purified recombinant peptide produced in E. coli
Conjugation	Un-conjugated
Alternate Names	Cyclization recombinase

Application Instructions

Application table	Application	Dilution
	WB	1:500-1:2000
Application Note	* The dilutions indicate recommended starting dilutions and the optimal dilutions or concentrations should be determined by the scientist.	

Properties

Form	Liquid
Purification	Affinity purification with immunogen.
Buffer	PBS, 0.05% Sodium azide and 20% Glycerol
Preservative	0.05% Sodium azide
Stabilizer	20% Glycerol
Concentration	3 mg/ml
Storage instruction	For continuous use, store undiluted antibody at 2-8°C for up to a week. For long-term storage, aliquot and store at -20°C. Storage in frost free freezers is not recommended. Avoid repeated freeze/thaw cycles. Suggest spin the vial prior to opening. The antibody solution should be gently mixed before use.
Note	For laboratory research only, not for drug, diagnostic or other use.

Bioinformation

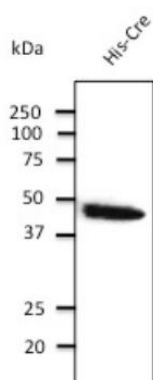
Background

Cre recombinase is a tyrosine recombinase enzyme derived from the P1 bacteriophage. The enzyme (38 kDa) is a member of the Integrase family of site specific recombinase and it is known to catalyse the site specific recombination event between two DNA recognition sites (loxP sites).

Calculated Mw

38 kDa

Images



ARG55725 anti-Cre antibody WB image

Western blot: His-tagged Cre protein stained with ARG55725 anti-Cre antibody at 1:2000 dilution.