

## ARG55729 anti-Maltose Binding Protein antibody

Package: 100 µg  
Store at: -20°C

### Summary

Product Description	Goat Polyclonal antibody recognizes Maltose Binding Protein
Tested Reactivity	Bacteria
Tested Application	WB
Specificity	In lysates of E. coli cells transformed with pMAL plasmids detects a band of 44 kDa by Western blot.
Host	Goat
Clonality	Polyclonal
Isotype	IgG
Target Name	Maltose Binding Protein
Immunogen	Purified recombinant peptide produced in E. coli
Conjugation	Un-conjugated
Alternate Names	malE; malJ; Maltose binding protein; maltose transporter subunit

### Application Instructions

Application table	Application	Dilution
	WB	1:500-1:2000
Application Note	* The dilutions indicate recommended starting dilutions and the optimal dilutions or concentrations should be determined by the scientist.	

### Properties

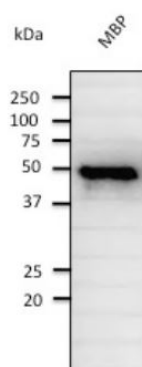
Form	Liquid
Purification	Affinity purification with immunogen.
Buffer	PBS, 0.05% Sodium azide and 20% Glycerol
Preservative	0.05% Sodium azide
Stabilizer	20% Glycerol
Concentration	3 mg/ml
Storage instruction	For continuous use, store undiluted antibody at 2-8°C for up to a week. For long-term storage, aliquot and store at -20°C. Storage in frost free freezers is not recommended. Avoid repeated freeze/thaw cycles. Suggest spin the vial prior to opening. The antibody solution should be gently mixed before use.
Note	For laboratory research only, not for drug, diagnostic or other use.

### Bioinformation

Gene Symbol	malE
Gene Full Name	maltose transporter subunit
Background	Biofilm microarray result was validated with RT-PCR. [More information is available at EcoGene: EG10554]. In addition to being the periplasmic substrate-binding component of the maltose ABC transporter, MalE with bound substrate is also able to bind to the chemoreceptor Tar to induce chemotaxis toward maltose. [More information is available at EcoCyc: EG10554].
Function	Involved in the high-affinity maltose membrane transport system MalEFGK. Initial receptor for the active transport of and chemotaxis toward maltooligosaccharides. [UniProt]
Calculated Mw	43 kDa

## Images

---



ARG55729 anti-Maltose Binding Protein antibody WB image

Western blot: MBP stained with ARG55729 anti-Maltose Binding Protein antibody at 1:2000 dilution.