

## ARG55735 anti-Burkholderia cenocepacia Hfq2 antibody

Package: 100 µg  
Store at: -20°C

### Summary

|                     |   |
|---------------------|---|
| Product Description | Goat Polyclonal antibody recognizes Burkholderia cenocepacia Hfq2                         |
| Tested Reactivity   | Bacteria  |
| Tested Application  | WB  |
| Host                | Goat  |
| Clonality           | Polyclonal  |
| Isotype             | IgG   |
| Target Name         | Burkholderia cenocepacia Hfq2   |
| Species             | Bacteria  |
| Immunogen           | Purified recombinant peptide around aa. 130 (C-terminus) of Burkholderia cenocepacia Hfq2 |
| Conjugation         | Un-conjugated   |

### Application Instructions

| Application table | Application  | Dilution     |
|-------------------|--|--------------|
|                   | WB   | 1:500-1:2000 |
| Application Note  | * The dilutions indicate recommended starting dilutions and the optimal dilutions or concentrations should be determined by the scientist. |              |

### Properties

|                     |   |
|---------------------|---|
| Form                | Liquid  |
| Purification        | Affinity purification with immunogen.   |
| Buffer              | PBS, 0.05% Sodium azide and 20% Glycerol  |
| Preservative        | 0.05% Sodium azide  |
| Stabilizer          | 20% Glycerol  |
| Concentration       | 3 mg/ml   |
| Storage instruction | For continuous use, store undiluted antibody at 2-8°C for up to a week. For long-term storage, aliquot and store at -20°C. Storage in frost free freezers is not recommended. Avoid repeated freeze/thaw cycles. Suggest spin the vial prior to opening. The antibody solution should be gently mixed before use. |
| Note                | For laboratory research only, not for drug, diagnostic or other use.  |

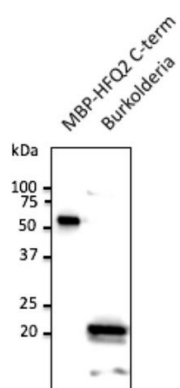
### Bioinformation

|            |   |
|------------|---|
| Background | Hfq2 protein is a RNA chaperone that binds small regulatory RNA (sRNAs) and mRNAs to facilitate mRNA translational regulation in response to changes in metabolite concentrations and environmental |
|------------|---|

and envelope stress.

## Images

---



ARG55735 anti-Burkholderia cenocepacia Hfq2 antibody WB image

Western blot: 1) 50 ng of protein and 2) 100 µg of total protein (Burkholderia cell lysate) stained with ARG55735 anti-Burkholderia cenocepacia Hfq2 antibody at 1:500 dilution.