

ARG55738
anti-ZO1 antibodyPackage: 100 µg, 50 µg
Store at: -20°C

Summary

Product Description	Goat Polyclonal antibody recognizes ZO1
Tested Reactivity	Hu, Ms, Rat, Dog, Mk
Tested Application	ICC/IF, IHC-Fr, IHC-P, WB
Host	Goat
Clonality	Polyclonal
Isotype	IgG
Target Name	ZO1
Species	Human
Immunogen	Purified recombinant peptide around aa. 1580 (C-terminus) of Human ZO-1
Conjugation	Un-conjugated
Alternate Names	Zonula occludens protein 1; Tight junction protein ZO-1; Tight junction protein 1; Zona occludens protein 1; ZO-1

Application Instructions

Application table	Application	Dilution
	ICC/IF	1:50 - 1:250
	IHC-Fr	1:50-1:300
	IHC-P	1:50-1:300
	WB	1:100 - 1:2000

Application Note * The dilutions indicate recommended starting dilutions and the optimal dilutions or concentrations should be determined by the scientist.

Properties

Form	Liquid
Purification	Affinity purification with immunogen.
Buffer	PBS, 0.05% Sodium azide and 20% Glycerol
Preservative	0.05% Sodium azide
Stabilizer	20% Glycerol
Concentration	3 mg/ml
Storage instruction	For continuous use, store undiluted antibody at 2-8°C for up to a week. For long-term storage, aliquot and store at -20°C. Storage in frost free freezers is not recommended. Avoid repeated freeze/thaw cycles. Suggest spin the vial prior to opening. The antibody solution should be gently mixed before use.

Note

For laboratory research only, not for drug, diagnostic or other use.

Bioinformation

Database links

[GeneID: 21872 Mouse](#)

[GeneID: 7082 Human](#)

[Swiss-port # P39447 Mouse](#)

[Swiss-port # Q07157 Human](#)

Gene Symbol

TJP1

Gene Full Name

tight junction protein 1

Background

This gene encodes a protein located on a cytoplasmic membrane surface of intercellular tight junctions. The encoded protein may be involved in signal transduction at cell-cell junctions. Alternative splicing of this gene results in multiple transcript variants. [provided by RefSeq, Jul 2014]

Function

The N-terminal may be involved in transducing a signal required for tight junction assembly, while the C-terminal may have specific properties of tight junctions. The alpha domain might be involved in stabilizing junctions. Plays a role in the regulation of cell migration by targeting CDC42BPB to the leading edge of migrating cells. [UniProt]

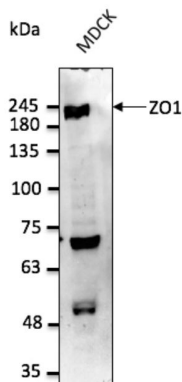
Calculated Mw

195 kDa

PTM

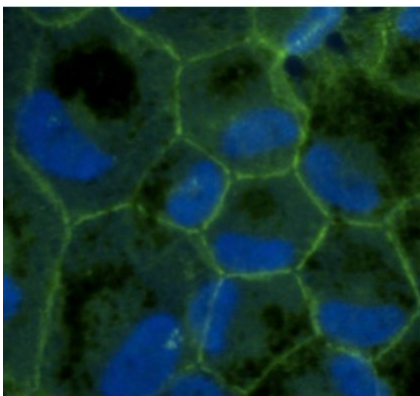
Phosphorylated. Dephosphorylated by PTPRJ.

Images



ARG55738 anti-ZO1 antibody WB image

Western blot: 50 µg of total protein (MDCK cell lysate) stained with ARG55738 anti-ZO1 antibody at 1:2500 dilution.



ARG55738 anti-ZO1 antibody ICC/IF image

Immunocytochemistry: primary RPE cells stained with ARG55738 anti-ZO1 antibody at 1:100 dilution.