

## ARG55745 anti-Lactoglobulin beta antibody

Package: 100 µg  
Store at: -20°C

### Summary

Product Description	Goat Polyclonal antibody recognizes Lactoglobulin beta
Tested Reactivity	Bov
Tested Application	WB
Specificity	Using purified protein and milk extract detects a band of 18.5 kDa by Western blot
Host	Goat
Clonality	Polyclonal
Isotype	IgG
Target Name	Lactoglobulin beta
Species	Bovine
Immunogen	Purified beta-Lactoglobulin from bovine milk (>90% by SDS-PAGE). Contains beta-lactoglobulins A and B.
Conjugation	Un-conjugated
Alternate Names	LGB; BLG; Beta-LG; Beta-lactoglobulin; allergen Bos d 5

### Application Instructions

Application table	Application	Dilution
	WB	1:500-1:2000
Application Note	* The dilutions indicate recommended starting dilutions and the optimal dilutions or concentrations should be determined by the scientist.	

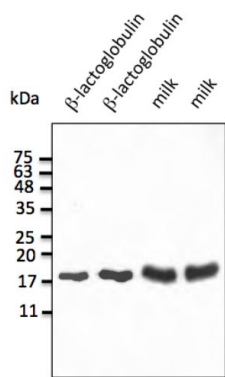
### Properties

Form	Liquid
Purification	Affinity purification with immunogen.
Buffer	PBS, 0.05% Sodium azide and 20% Glycerol
Preservative	0.05% Sodium azide
Stabilizer	20% Glycerol
Concentration	3 mg/ml
Storage instruction	For continuous use, store undiluted antibody at 2-8°C for up to a week. For long-term storage, aliquot and store at -20°C. Storage in frost free freezers is not recommended. Avoid repeated freeze/thaw cycles. Suggest spin the vial prior to opening. The antibody solution should be gently mixed before use.
Note	For laboratory research only, not for drug, diagnostic or other use.

Bioinformation

Database links	<a href="#">GeneID: 280838 Bovine</a>  <a href="#">Swiss-port # P02754 Bovine</a>
Gene Symbol	PAEP
Gene Full Name	progesteragen-associated endometrial protein
Function	Primary component of whey, it binds retinol and is probably involved in the transport of that molecule. [UniProt]
Calculated Mw	21 kDa
PTM	At least two differentially glycosylated forms are found. Glycodelin-A (GdA) (amniotic fluid) with contraceptive and immunosuppressive activities and glycodelin-S (Gds) (seminal plasma) whose role is not yet known. The gender-specific glycosylation may serve to regulate key process involved in human reproduction.

Images



ARG55745 anti-Lactoglobulin beta antibody WB image

Western blot: 50-75 ng of beta-lactoglobulin protein (Lane 1, 2) and 50-100  $\mu$ g of dry milk (Lane 3, 4) stained with ARG55745 anti-Lactoglobulin beta antibody at 1:2500 dilution.