

## ARG55749 anti-Enolase 1 antibody

Package: 100 µl  
Store at: -20°C

### Summary

Product Description	Mouse Monoclonal antibody recognizes Enolase 1
Tested Reactivity	Hu, Ms
Tested Application	IHC-P, WB
Host	Mouse
Clonality	Monoclonal
Clone	786CT6.6.4
Isotype	IgG, kappa
Target Name	Enolase 1
Species	Human
Immunogen	Purified His-tagged Human Enolase1 protein
Conjugation	Un-conjugated
Alternate Names	MPB1; Plasminogen-binding protein; Alpha-enolase; MBP-1; NNE; PPH; Enolase 1; ENO1L1; Phosphopyruvate hydratase; 2-phospho-D-glycerate hydro-lyase; C-myc promoter-binding protein; Non-neural enolase; MPB-1; EC 4.2.1.11

### Application Instructions

Application table	Application	Dilution
	IHC-P	1:25
	WB	1:1000
Application Note	* The dilutions indicate recommended starting dilutions and the optimal dilutions or concentrations should be determined by the scientist.	
Positive Control	NIH/3T3	

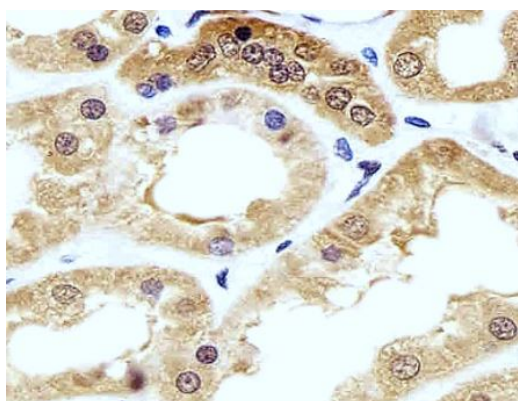
### Properties

Form	Liquid
Purification	Purification with Protein G.
Buffer	PBS and 0.09% (W/V) Sodium azide.
Preservative	0.09% (W/V) Sodium azide.
Storage instruction	For continuous use, store undiluted antibody at 2-8°C for up to a week. For long-term storage, aliquot and store at -20°C or below. Storage in frost free freezers is not recommended. Avoid repeated freeze/thaw cycles. Suggest spin the vial prior to opening. The antibody solution should be gently mixed before use.
Note	For laboratory research only, not for drug, diagnostic or other use.

## Bioinformation

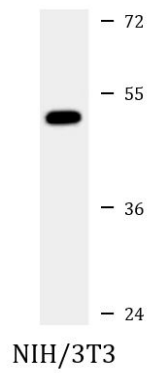
Database links	<a href="#">GeneID: 13806 Mouse</a> <a href="#">GeneID: 2023 Human</a> <a href="#">Swiss-port # P06733 Human</a> <a href="#">Swiss-port # P17182 Mouse</a>
Gene Symbol	ENO1
Gene Full Name	enolase 1, (alpha)
Background	This gene encodes alpha-enolase, one of three enolase isoenzymes found in mammals. Each isoenzyme is a homodimer composed of 2 alpha, 2 gamma, or 2 beta subunits, and functions as a glycolytic enzyme. Alpha-enolase in addition, functions as a structural lens protein (tau-crystallin) in the monomeric form. Alternative splicing of this gene results in a shorter isoform that has been shown to bind to the c-myc promoter and function as a tumor suppressor. Several pseudogenes have been identified, including one on the long arm of chromosome 1. Alpha-enolase has also been identified as an autoantigen in Hashimoto encephalopathy. [provided by RefSeq, Jan 2011]
Function	<p>Multifunctional enzyme that, as well as its role in glycolysis, plays a part in various processes such as growth control, hypoxia tolerance and allergic responses. May also function in the intravascular and pericellular fibrinolytic system due to its ability to serve as a receptor and activator of plasminogen on the cell surface of several cell-types such as leukocytes and neurons. Stimulates immunoglobulin production.</p> <p>MBP1 binds to the myc promoter and acts as a transcriptional repressor. May be a tumor suppressor. [UniProt]</p>
Calculated Mw	47 kDa
PTM	ISGylated.
Cellular Localization	Cytoplasm. Cell membrane. Cytoplasm, myofibril, sarcomere, M line. Note=Can translocate to the plasma membrane in either the homodimeric (alpha/alpha) or heterodimeric (alpha/gamma) form. ENO1 is localized to the M line

## Images



ARG55749 anti-Enolase 1 antibody IHC-P image

Immunohistochemistry: Paraffin-embedded Human kidney tissue stained with ARG55749 anti-Enolase 1 antibody at 1:25 dilution.



#### ARG55749 anti-Enolase 1 antibody WB image

Western blot: 35 µg of NIH/3T3 cell lysate stained with ARG55749 anti-Enolase 1 antibody.