

ARG55768
anti-SHB antibodyPackage: 100 µl
Store at: -20°C**Summary**

Product Description	Rabbit Polyclonal antibody recognizes SHB
Tested Reactivity	Hu
Tested Application	FACS, IHC-P, WB
Host	Rabbit
Clonality	Polyclonal
Isotype	IgG
Target Name	SHB
Species	Human
Immunogen	KLH-conjugated synthetic peptide corresponding to aa. 250-290 of Human SHB.
Conjugation	Un-conjugated
Alternate Names	SH2 domain-containing adapter protein B; bA3J10.2

Application Instructions

Application table	Application	Dilution
	FACS	1:25
	IHC-P	1:25
	WB	1:1000
Application Note	* The dilutions indicate recommended starting dilutions and the optimal dilutions or concentrations should be determined by the scientist.	
Positive Control	HepG2	

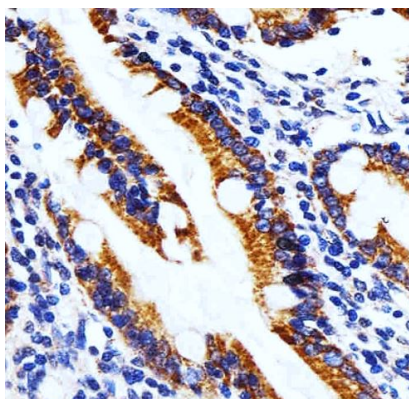
Properties

Form	Liquid
Purification	Purification with Protein A and immunogen peptide.
Buffer	PBS and 0.09% (W/V) sodium azide.
Preservative	0.09% (W/V) sodium azide.
Storage instruction	For continuous use, store undiluted antibody at 2-8°C for up to a week. For long-term storage, aliquot and store at -20°C or below. Storage in frost free freezers is not recommended. Avoid repeated freeze/thaw cycles. Suggest spin the vial prior to opening. The antibody solution should be gently mixed before use.
Note	For laboratory research only, not for drug, diagnostic or other use.

Bioinformation

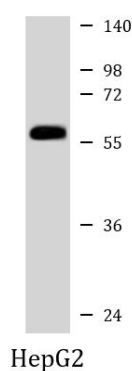
Database links	GeneID: 6461 Human Swiss-port # Q15464 Human
Gene Symbol	SHB
Gene Full Name	Src homology 2 domain containing adaptor protein B
Function	Adapter protein which regulates several signal transduction cascades by linking activated receptors to downstream signaling components. May play a role in angiogenesis by regulating FGFR1, VEGFR2 and PDGFR signaling. May also play a role in T-cell antigen receptor/TCR signaling, interleukin-2 signaling, apoptosis and neuronal cells differentiation by mediating basic-FGF and NGF-induced signaling cascades. May also regulate IRS1 and IRS2 signaling in insulin-producing cells. [UniProt]
Calculated Mw	55 kDa
PTM	Phosphorylated upon PDGFRA, PDGFRB, TCR, IL2 receptor, FGFR1 or VEGFR2 activation.
Cellular Localization	Cytoplasm. Cell membrane; Peripheral membrane protein; Cytoplasmic side. Note=Associates with membrane lipid rafts upon TCR stimulation

Images



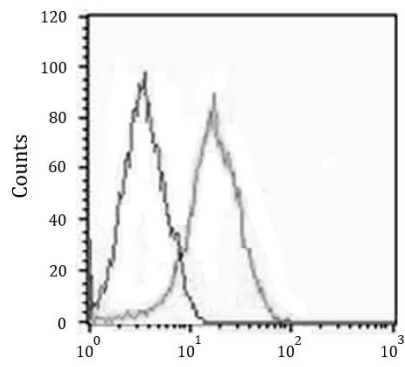
ARG55768 anti-SHB antibody IHC-P image

Immunohistochemistry: Paraffin-embedded Human small intestine tissue stained with ARG55768 anti-SHB antibody at 1:25 dilution.



ARG55768 anti-SHB antibody WB image

Western blot: 35 µg of HepG2 cell lysate stained with ARG55768 anti-SHB antibody at 1:1000 dilution.



ARG55768 anti-SHB antibody FACS image

Flow Cytometry: HepG2 cells stained with ARG55768 anti-SHB antibody (right histogram) at 1:25 dilution or isotype control antibody (left histogram), followed by incubation with Alexa Fluor® 488 labelled secondary antibody.