

ARG55791 anti-SGK3 antibody

Package: 100 µl
Store at: -20°C

Summary

Product Description	Rabbit Polyclonal antibody recognizes SGK3
Tested Reactivity	Hu, Ms
Predict Reactivity	Rat
Tested Application	IHC-P, WB
Host	Rabbit
Clonality	Polyclonal
Isotype	IgG
Target Name	SGK3
Species	Human
Immunogen	KLH-conjugated synthetic peptide corresponding to aa. 1-30 (N-terminus) of Human SGK3.
Conjugation	Un-conjugated
Alternate Names	Serine/threonine-protein kinase Sgk3; EC 2.7.11.1; Serum/glucocorticoid-regulated kinase 3; Serum/glucocorticoid-regulated kinase-like; Cytokine-independent survival kinase; CISK; SGK2; SGK1

Application Instructions

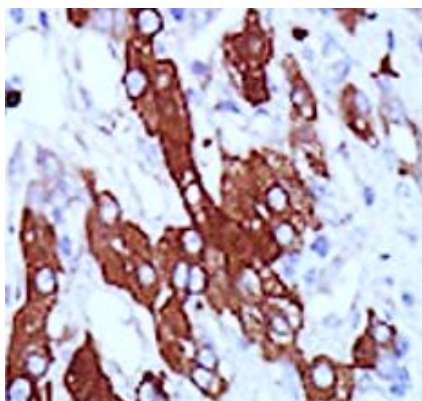
Application table	Application	Dilution
	IHC-P	1:50 - 1:100
	WB	1:1000
Application Note	* The dilutions indicate recommended starting dilutions and the optimal dilutions or concentrations should be determined by the scientist.	
Positive Control	A375	

Properties

Form	Liquid
Purification	Purification with Protein G.
Buffer	PBS and 0.09% (W/V) Sodium azide.
Preservative	0.09% (W/V) Sodium azide.
Storage instruction	For continuous use, store undiluted antibody at 2-8°C for up to a week. For long-term storage, aliquot and store at -20°C or below. Storage in frost free freezers is not recommended. Avoid repeated freeze/thaw cycles. Suggest spin the vial prior to opening. The antibody solution should be gently mixed before use.
Note	For laboratory research only, not for drug, diagnostic or other use.

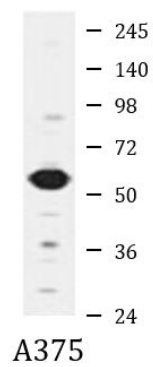
Database links	GeneID: 170755 Mouse GeneID: 23678 Human Swiss-port # Q96BR1 Human Swiss-port # Q9ERE3 Mouse
Gene Symbol	SGK3
Gene Full Name	serum/glucocorticoid regulated kinase family, member 3
Background	This gene is a member of the Ser/Thr protein kinase family and encodes a phosphoprotein with a PX (phox homology) domain. The protein phosphorylates several target proteins and has a role in neutral amino acid transport and activation of potassium and chloride channels. Alternate transcriptional splice variants, encoding different isoforms, have been characterized. [provided by RefSeq, Jul 2008]
Function	Serine/threonine-protein kinase which is involved in the regulation of a wide variety of ion channels, membrane transporters, cell growth, proliferation, survival and migration. Up-regulates Na ⁺ channels: SCNN1A/ENAC and SCN5A, K ⁺ channels: KCNA3/KV1.3, KCNE1, KCNQ1 and KCNH2/HERG, epithelial Ca ²⁺ channels: TRPV5 and TRPV6, chloride channel: BSND, creatine transporter: SLC6A8, Na ⁺ /dicarboxylate cotransporter: SLC13A2/NADC1, Na ⁺ -dependent phosphate cotransporter: SLC34A2/NAPI-2B, amino acid transporters: SLC1A5/ASCT2 and SLC6A19, glutamate transporters: SLC1A3/EAAT1, SLC1A6/EAAT4 and SLC1A7/EAAT5, glutamate receptors: GRIA1/GLUR1 and GRIK2/GLUR6, Na ⁺ /H ⁺ exchanger: SLC9A3/NHE3, and the Na ⁺ /K ⁺ ATPase. Plays a role in the regulation of renal tubular phosphate transport and bone density. Phosphorylates NEDD4L and GSK3B. Positively regulates ER transcription activity through phosphorylation of FLII. Negatively regulates the function of ITCH/AIP4 via its phosphorylation and thereby prevents CXCR4 from being efficiently sorted to lysosomes. [UniProt]
Calculated Mw	57 kDa
Cellular Localization	Cytoplasmic vesicle. Early endosome. Recycling endosome. Note=Endosomal localization is a prerequisite for complete kinase activity. It is essential for its colocalization with the kinase responsible for phosphorylating Ser-486 thus allowing PDPK1 phosphorylation of Thr-320 resulting in complete activation of SGK3. Localized in vesicle-like structures and in the early endosome. Colocalizes with SLC9A3/NHE3 in the recycling endosomes

Images



ARG55791 anti-SGK3 antibody IHC-P image

Immunohistochemistry: Formalin-fixed and paraffin-embedded Human hepatocarcinoma tissue stained with ARG55791 anti-SGK3 antibody.



ARG55791 anti-SGK3 antibody WB image

Western blot: A375 cell lysate stained with ARG55791 anti-SGK3 antibody.