

## ARG55800 anti-ACE2 antibody

Package: 50 µg  
Store at: -20°C

### Summary

Product Description	Rabbit Polyclonal antibody recognizes ACE2
Tested Reactivity	Hu
Predict Reactivity	Ms
Tested Application	ICC/IF, IHC-P, WB
Specificity	This antibody has no cross response to ACE1.
Host	Rabbit
Clonality	Polyclonal
Isotype	IgG
Target Name	ACE2
Species	Human
Immunogen	Synthetic peptide within aa. 180-230 of Human ACE2.
Conjugation	Un-conjugated
Alternate Names	Angiotensin-converting enzyme homolog; ACEH; Angiotensin-converting enzyme 2; Metalloprotease MPROT15; ACE-related carboxypeptidase; EC 3.4.17.23

### Application Instructions

Application table	Application	Dilution
	ICC/IF	20 µg/ml
	IHC-P	2 µg/ml
	WB	2 µg/ml
Application Note	* The dilutions indicate recommended starting dilutions and the optimal dilutions or concentrations should be determined by the scientist.	
Positive Control	Human Kidney Tissue Lysate	
Observed Size	~ 105 kDa	

### Properties

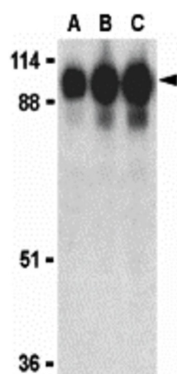
Form	Liquid
Purification	Affinity purification with immunogen.
Buffer	PBS and 0.02% Sodium azide
Preservative	0.02% Sodium azide
Concentration	1 mg/ml

Storage instruction	For continuous use, store undiluted antibody at 2-8°C for up to a week. For long-term storage, aliquot and store at -20°C or below. Storage in frost free freezers is not recommended. Avoid repeated freeze/thaw cycles. Suggest spin the vial prior to opening. The antibody solution should be gently mixed before use.
Note	For laboratory research only, not for drug, diagnostic or other use.

## Bioinformation

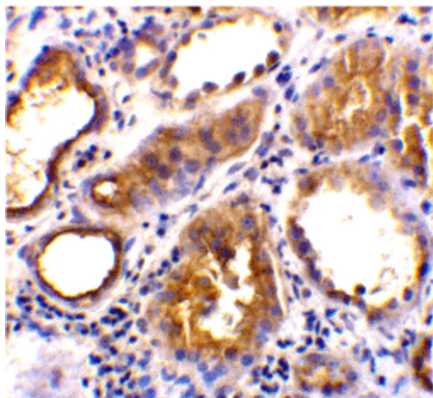
Database links	<a href="#">GeneID: 59272 Human</a> <a href="#">Swiss-port # Q9BYF1 Human</a>
Gene Symbol	ACE2
Gene Full Name	angiotensin I converting enzyme 2
Background	The protein encoded by this gene belongs to the angiotensin-converting enzyme family of dipeptidyl carboxypeptidases and has considerable homology to human angiotensin 1 converting enzyme. This secreted protein catalyzes the cleavage of angiotensin I into angiotensin 1-9, and angiotensin II into the vasodilator angiotensin 1-7. The organ- and cell-specific expression of this gene suggests that it may play a role in the regulation of cardiovascular and renal function, as well as fertility. In addition, the encoded protein is a functional receptor for the spike glycoprotein of the human coronaviruses SARS and HCoV-NL63. [provided by RefSeq, Jul 2008]
Function	Carboxypeptidase which converts angiotensin I to angiotensin 1-9, a peptide of unknown function, and angiotensin II to angiotensin 1-7, a vasodilator. Also able to hydrolyze apelin-13 and dynorphin-13 with high efficiency. May be an important regulator of heart function. In case of human coronaviruses SARS and HCoV-NL63 infections, serve as functional receptor for the spike glycoprotein of both coronaviruses. [UniProt]
Highlight	Related products: <a href="#">ACE2 antibodies</a> ; <a href="#">ACE2 ELISA Kits</a> ; <a href="#">ACE2 recombinant proteins</a> ; <a href="#">Anti-Rabbit IgG secondary antibodies</a> ; Related news: <a href="#">HMGB1, a biomarker and therapeutic target in COVID-19</a> <a href="#">ACE2, receptor of 2019-nCoV</a>
Calculated Mw	92 kDa
PTM	N-glycosylation on Asn-90 may limit SARS infectivity. Proteolytic cleavage by ADAM17 generates a secreted form. Also cleaved by serine proteases: TMPRSS2, TMPRSS11D and HPN/TMPRSS1.

## Images



ARG55800 anti-ACE2 antibody WB image

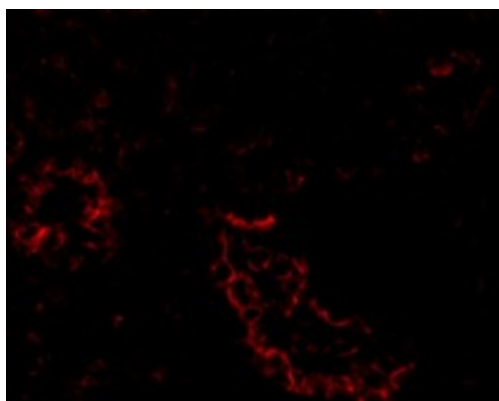
Western blot: Human kidney lysate stained with ARG55800 anti-ACE2 antibody at (A) 0.5, (B) 1, and (C) 2 µg/ml dilution.



ARG55800 anti-ACE2 antibody IHC-P image

Immunohistochemistry: paraffin-embedded Human kidney tissue stained with ARG55800 anti-ACE2 antibody at 2  $\mu\text{g}/\text{ml}$  dilution.

---



ARG55800 anti-ACE2 antibody ICC/IF image

Immunofluorescence: Human Kidney cells stained with ARG55800 anti-ACE2 antibody at 20  $\mu\text{g}/\text{ml}$  dilution.

---