

ARG55831
anti-Visinin like 1 antibodyPackage: 100 µl
Store at: -20°C

Summary

Product Description	Rabbit Polyclonal antibody recognizes Visinin like 1
Tested Reactivity	Hu, Ms, Rat
Tested Application	IHC-P, WB
Host	Rabbit
Clonality	Polyclonal
Isotype	IgG
Target Name	Visinin like 1
Species	Human
Immunogen	KLH-conjugated synthetic peptide corresponding to aa. 123-150 (C-terminus) of Human Visinin like 1.
Conjugation	Un-conjugated
Alternate Names	HPCAL3; HUVISL1; Visinin-like protein 1; HLP3; Hippocalcin-like protein 3; VILIP; VLP-1; VILIP-1

Application Instructions

Application table	Application	Dilution
	IHC-P	1:50 - 1:100
	WB	1:1000
Application Note	* The dilutions indicate recommended starting dilutions and the optimal dilutions or concentrations should be determined by the scientist.	
Positive Control	SW480	

Properties

Form	Liquid
Purification	Purification with Protein G.
Buffer	PBS and 0.09% (W/V) Sodium azide
Preservative	0.09% (W/V) Sodium azide
Storage instruction	For continuous use, store undiluted antibody at 2-8°C for up to a week. For long-term storage, aliquot and store at -20°C or below. Storage in frost free freezers is not recommended. Avoid repeated freeze/thaw cycles. Suggest spin the vial prior to opening. The antibody solution should be gently mixed before use.
Note	For laboratory research only, not for drug, diagnostic or other use.

Bioinformation

Database links

[GeneID: 26950 Mouse](#)

[GeneID: 7447 Human](#)

[Swiss-port # P62760 Human](#)

[Swiss-port # P62761 Mouse](#)

Gene Symbol VSNL1

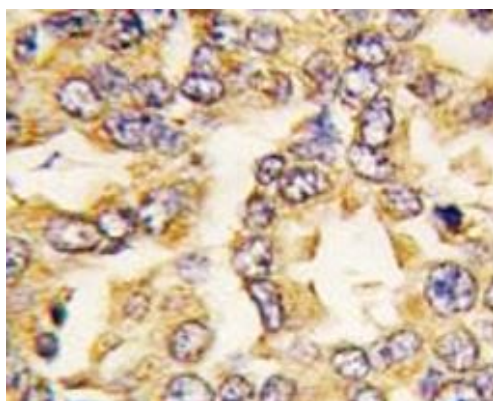
Gene Full Name visinin-like 1

Background This gene is a member of the visinin/recoverin subfamily of neuronal calcium sensor proteins. The encoded protein is strongly expressed in granule cells of the cerebellum where it associates with membranes in a calcium-dependent manner and modulates intracellular signaling pathways of the central nervous system by directly or indirectly regulating the activity of adenylyl cyclase. Alternatively spliced transcript variants have been observed, but their full-length nature has not been determined. [provided by RefSeq, Jul 2008]

Function Regulates (in vitro) the inhibition of rhodopsin phosphorylation in a calcium-dependent manner. [UniProt]

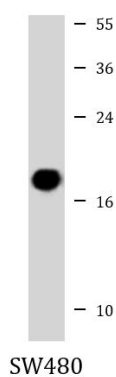
Calculated Mw 22 kDa

Images



ARG55831 anti-Visinin like 1 antibody IHC-P image

Immunohistochemistry: Formalin-fixed and paraffin-embedded Human breast carcinoma tissue stained with ARG55831 anti-Visinin like 1 antibody.



ARG55831 anti-Visinin like 1 antibody WB image

Western blot: 35 µg of SW480 cell lysate stained with ARG55831 anti-Visinin like 1 antibody at 1:1000 dilution.