

## ARG55842 anti-GLS2 antibody

Package: 100 µl  
Store at: -20°C

### Summary

Product Description	Rabbit Polyclonal antibody recognizes GLS2
Tested Reactivity	Hu, Ms
Predict Reactivity	Rat
Tested Application	IHC-P, WB
Host	Rabbit
Clonality	Polyclonal
Isotype	IgG
Target Name	GLS2
Species	Human
Immunogen	KLH-conjugated synthetic peptide corresponding to aa. 498-524 (C-terminus) of Human GLS2.
Conjugation	Un-conjugated
Alternate Names	L-glutamine amidohydrolase; LGA; EC 3.5.1.2; Glutaminase liver isoform, mitochondrial; GA; hLGA; GLS; L-glutaminase

### Application Instructions

Application table	Application	Dilution
	IHC-P	1:10 - 1:50
	WB	1:1000
Application Note	* The dilutions indicate recommended starting dilutions and the optimal dilutions or concentrations should be determined by the scientist.	
Positive Control	Human brain	

### Properties

Form	Liquid
Purification	Purification with Protein A and immunogen peptide.
Buffer	PBS and 0.09% (W/V) Sodium azide
Preservative	0.09% (W/V) Sodium azide
Storage instruction	For continuous use, store undiluted antibody at 2-8°C for up to a week. For long-term storage, aliquot and store at -20°C or below. Storage in frost free freezers is not recommended. Avoid repeated freeze/thaw cycles. Suggest spin the vial prior to opening. The antibody solution should be gently mixed before use.
Note	For laboratory research only, not for drug, diagnostic or other use.

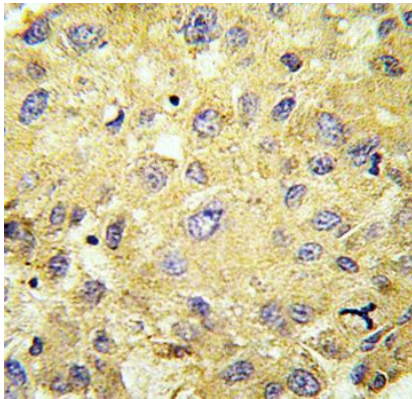
## Bioinformation

---

Database links	<a href="#">GeneID: 216456 Mouse</a> <a href="#">GeneID: 27165 Human</a> <a href="#">Swiss-port # Q571F8 Mouse</a> <a href="#">Swiss-port # Q9UI32 Human</a>
Gene Symbol	GLS2
Gene Full Name	glutaminase 2 (liver, mitochondrial)
Background	The protein encoded by this gene is a mitochondrial phosphate-activated glutaminase that catalyzes the hydrolysis of glutamine to stoichiometric amounts of glutamate and ammonia. Originally thought to be liver-specific, this protein has been found in other tissues as well. Alternative splicing results in multiple transcript variants that encode different isoforms. [provided by RefSeq, Jul 2013]
Function	Plays an important role in the regulation of glutamine catabolism. Promotes mitochondrial respiration and increases ATP generation in cells by catalyzing the synthesis of glutamate and alpha-ketoglutarate. Increases cellular anti-oxidant function via NADH and glutathione production. May play a role in preventing tumor proliferation. [UniProt]
Calculated Mw	66 kDa
Cellular Localization	Mitochondrion.

## Images

---



ARG55842 anti-GLS2 antibody IHC-P image

Immunohistochemistry: Formalin-fixed and paraffin-embedded Human hepatocarcinoma stained with ARG55842 anti-GLS2 antibody.



Human brain

ARG55842 anti-GLS2 antibody WB image

Western blot: 35 µg of Human brain lysate stained with ARG55842 anti-GLS2 antibody at 1:1000 dilution.