

## ARG55853 anti-C1GALT1 antibody

Package: 100 µl  
Store at: -20°C

### Summary

Product Description	Rabbit Polyclonal antibody recognizes C1GALT1
Tested Reactivity	Hu, Ms
Tested Application	WB
Host	Rabbit
Clonality	Polyclonal
Isotype	IgG
Target Name	C1GALT1
Species	Human
Immunogen	KLH-conjugated synthetic peptide corresponding to aa. 115-144 (Center) of Human C1GALT1.
Conjugation	Un-conjugated
Alternate Names	T-synthase; C1GALT; Core 1 beta3-Gal-T1; C1GalT1; B3Gal-T8; Core 1 beta1,3-galactosyltransferase 1; Beta-1,3-galactosyltransferase; Core 1 O-glycan T-synthase; EC 2.4.1.122; Glycoprotein-N-acetylgalactosamine 3-beta-galactosyltransferase 1; Core 1 UDP-galactose:N-acetylgalactosamine-alpha-R beta 1,3-galactosyltransferase 1

### Application Instructions

Application table	Application	Dilution
	WB	1:1000
Application Note	* The dilutions indicate recommended starting dilutions and the optimal dilutions or concentrations should be determined by the scientist.	
Positive Control	Mouse kidney	

### Properties

Form	Liquid
Purification	Purification with Protein A and immunogen peptide.
Buffer	PBS and 0.09% (W/V) Sodium azide
Preservative	0.09% (W/V) Sodium azide
Storage instruction	For continuous use, store undiluted antibody at 2-8°C for up to a week. For long-term storage, aliquot and store at -20°C or below. Storage in frost free freezers is not recommended. Avoid repeated freeze/thaw cycles. Suggest spin the vial prior to opening. The antibody solution should be gently mixed before use.
Note	For laboratory research only, not for drug, diagnostic or other use.

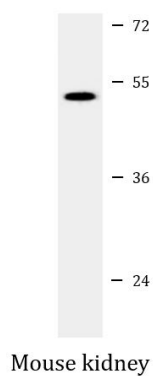
## Bioinformation

---

Database links	<a href="#">GeneID: 56913 Human</a> <a href="#">GeneID: 94192 Mouse</a> <a href="#">Swiss-port # Q9JJ06 Mouse</a> <a href="#">Swiss-port # Q9NS00 Human</a>
Gene Symbol	C1GALT1
Gene Full Name	core 1 synthase, glycoprotein-N-acetylgalactosamine 3-beta-galactosyltransferase 1
Background	The protein encoded by this gene generates the common core 1 O-glycan structure, Gal-beta-1-3GalNAc-R, by the transfer of Gal from UDP-Gal to GalNAc-alpha-1-R. Core 1 is a precursor for many extended mucin-type O-glycans on cell surface and secreted glycoproteins. Studies in mice suggest that this gene plays a key role in thrombopoiesis and kidney homeostasis.[provided by RefSeq, Sep 2010]
Function	Glycosyltransferase that generates the core 1 O-glycan Gal-beta1-3GalNAc-alpha1-Ser/Thr (T antigen), which is a precursor for many extended O-glycans in glycoproteins. Plays a central role in many processes, such as angiogenesis, thrombopoiesis and kidney homeostasis development. [UniProt]
Calculated Mw	42 kDa
Cellular Localization	Membrane; Single-pass type II membrane protein

## Images

---



ARG55853 anti-C1GALT1 antibody WB image

Western blot: 35 µg of Mouse kidney lysate stained with ARG55853 anti-C1GALT1 antibody.