

ARG55854 anti-ZRSR2 antibody

Package: 100 µl
Store at: -20°C

Summary

Product Description	Rabbit Polyclonal antibody recognizes ZRSR2
Tested Reactivity	Hu
Tested Application	IHC-P, WB
Host	Rabbit
Clonality	Polyclonal
Isotype	IgG
Target Name	ZRSR2
Species	Human
Immunogen	KLH-conjugated synthetic peptide corresponding to aa. 453-482 (C-terminus) of Human ZRSR2.
Conjugation	Un-conjugated
Alternate Names	Renal carcinoma antigen NY-REN-20; RNU2; CCCH type zinc finger, RNA-binding motif and serine/arginine rich protein 2; U2AF35-related protein; U2 small nuclear ribonucleoprotein auxiliary factor 35 kDa subunit-related protein 2; U2; U2AF1L2; ZC3H22; URP; U2AF1RS2; U2AF1-RS2

Application Instructions

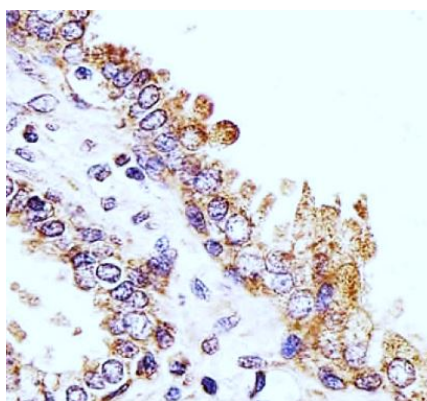
Application table	Application	Dilution
	IHC-P	1:25
	WB	1:1000
Application Note	* The dilutions indicate recommended starting dilutions and the optimal dilutions or concentrations should be determined by the scientist.	
Positive Control	HepG2	

Properties

Form	Liquid
Purification	Purification with Protein A and immunogen peptide.
Buffer	PBS and 0.09% (W/V) Sodium azide
Preservative	0.09% (W/V) Sodium azide
Storage instruction	For continuous use, store undiluted antibody at 2-8°C for up to a week. For long-term storage, aliquot and store at -20°C or below. Storage in frost free freezers is not recommended. Avoid repeated freeze/thaw cycles. Suggest spin the vial prior to opening. The antibody solution should be gently mixed before use.
Note	For laboratory research only, not for drug, diagnostic or other use.

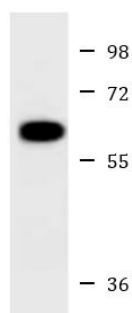
Database links	GeneID: 8233 Human Swiss-port # Q15696 Human
Gene Symbol	ZRSR2
Gene Full Name	zinc finger (CCCH type), RNA-binding motif and serine/arginine rich 2
Background	This gene encodes an essential splicing factor. The encoded protein associates with the U2 auxiliary factor heterodimer, which is required for the recognition of a functional 3' splice site in pre-mRNA splicing, and may play a role in network interactions during spliceosome assembly. [provided by RefSeq, Jul 2008]
Function	Pre-mRNA-binding protein required for splicing of both U2- and U12-type introns. Selectively interacts with the 3'-splice site of U2- and U12-type pre-mRNAs and promotes different steps in U2 and U12 intron splicing. Recruited to U12 pre-mRNAs in an ATP-dependent manner and is required for assembly of the prespliceosome, a precursor to other spliceosomal complexes. For U2-type introns, it is selectively and specifically required for the second step of splicing. [UniProt]
Calculated Mw	58 kDa
PTM	Phosphorylated in the RS domain by SRPK1.
Cellular Localization	Nucleus.

Images



ARG55854 anti-ZRSR2 antibody IHC-P image

Immunohistochemistry: Paraffin-embedded Human prostate tissue stained with ARG55854 anti-ZRSR2 antibody at 1:25 dilution.



HepG2

ARG55854 anti-ZRSR2 antibody WB image

Western blot: 35 µg of HepG2 cell lysate stained with ARG55854 anti-ZRSR2 antibody.