

ARG55856 anti-FAM50A antibody

Package: 100 µl
Store at: -20°C

Summary

Product Description	Rabbit Polyclonal antibody recognizes FAM50A
Tested Reactivity	Hu
Predict Reactivity	Ms, Xenopus, Zfsh
Tested Application	ICC/IF, WB
Host	Rabbit
Clonality	Polyclonal
Isotype	IgG
Target Name	FAM50A
Species	Human
Immunogen	KLH-conjugated synthetic peptide corresponding to aa. 311-339 (C-terminus) of Human FAM50A.
Conjugation	Un-conjugated
Alternate Names	DXS9928E; HXC26; Protein FAM50A; Protein XAP-5; HXC-26; 9F; XAP5; Protein HXC-26

Application Instructions

Application table	Application	Dilution
	ICC/IF	1:25
	WB	1:1000
Application Note	* The dilutions indicate recommended starting dilutions and the optimal dilutions or concentrations should be determined by the scientist.	
Positive Control	A549	

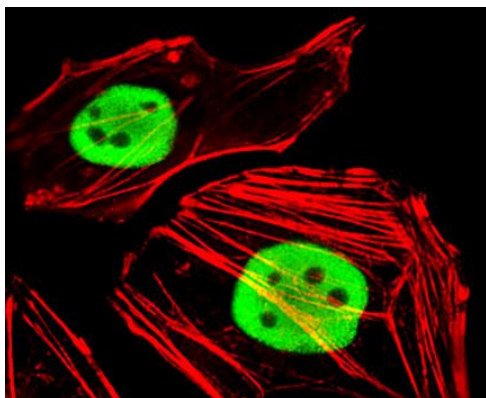
Properties

Form	Liquid
Purification	Purification with Protein A and immunogen peptide.
Buffer	PBS and 0.09% (W/V) Sodium azide
Preservative	0.09% (W/V) Sodium azide
Storage instruction	For continuous use, store undiluted antibody at 2-8°C for up to a week. For long-term storage, aliquot and store at -20°C or below. Storage in frost free freezers is not recommended. Avoid repeated freeze/thaw cycles. Suggest spin the vial prior to opening. The antibody solution should be gently mixed before use.
Note	For laboratory research only, not for drug, diagnostic or other use.

Bioinformation

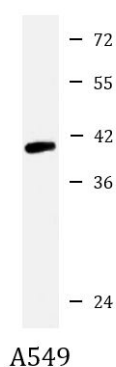
Database links	GeneID: 9130 Human Swiss-port # Q14320 Human
Gene Symbol	FAM50A
Gene Full Name	family with sequence similarity 50, member A
Background	This gene belongs to the FAM50 family. The encoded protein is highly conserved in length and sequence across different species. It is a basic protein containing a nuclear localization signal, and may function as a DNA-binding protein or a transcriptional factor. [provided by RefSeq, Sep 2009]
Function	May be a DNA-binding protein or transcriptional factor. [UniProt]
Calculated Mw	40 kDa
Cellular Localization	Nucleus.

Images



ARG55856 anti-FAM50A antibody ICC/IF image

Immunofluorescence: HeLa cells stained with ARG55856 anti-FAM50A antibody (green) at 1:25 dilution. Cytoplasmic actin was counterstained with Alexa Fluor® 555 conjugated with Phalloidin (red).



ARG55856 anti-FAM50A antibody WB image

Western blot: 20 µg of A549 cell lysate stained with ARG55856 anti-FAM50A antibody at 1:1000 dilution.