

ARG55857 anti-RPLP0P6 antibody

Package: 100 µl
Store at: -20°C

Summary

Product Description	Rabbit Polyclonal antibody recognizes RPLP0P6
Tested Reactivity	Hu
Predict Reactivity	Ms, Rat, Bov, Chk, Pig, Zfsh
Tested Application	ICC/IF, IHC-P, WB
Host	Rabbit
Clonality	Polyclonal
Isotype	IgG
Target Name	RPLP0P6
Species	Human
Immunogen	KLH-conjugated synthetic peptide corresponding to aa. 1-30 (N-terminus) of Human RPLP0P6.
Conjugation	Un-conjugated
Alternate Names	60S acidic ribosomal protein P0-like

Application Instructions

Application table	Application	Dilution
	ICC/IF	1:25
	IHC-P	1:25
	WB	1:1000
Application Note	* The dilutions indicate recommended starting dilutions and the optimal dilutions or concentrations should be determined by the scientist.	
Positive Control	U251	

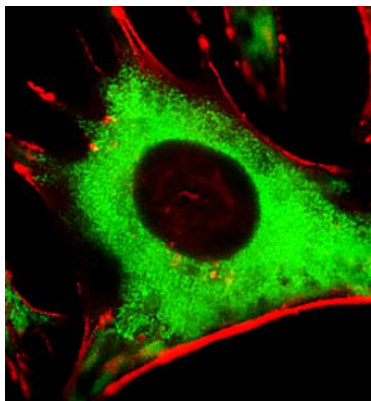
Properties

Form	Liquid
Purification	Purification with Protein A and immunogen peptide.
Buffer	PBS and 0.09% (W/V) Sodium azide
Preservative	0.09% (W/V) Sodium azide
Storage instruction	For continuous use, store undiluted antibody at 2-8°C for up to a week. For long-term storage, aliquot and store at -20°C or below. Storage in frost free freezers is not recommended. Avoid repeated freeze/thaw cycles. Suggest spin the vial prior to opening. The antibody solution should be gently mixed before use.
Note	For laboratory research only, not for drug, diagnostic or other use.

Bioinformation

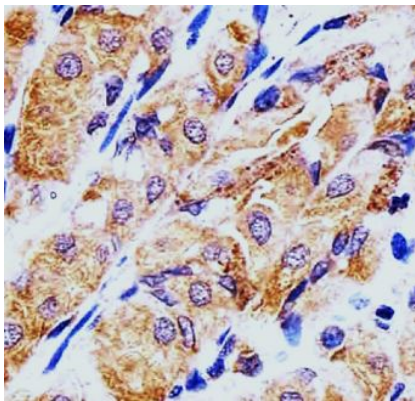
Gene Symbol	RPLP0P6
Calculated Mw	34 kDa

Images



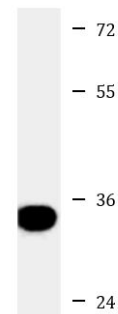
ARG55857 anti-RPLP0P6 antibody ICC/IF image

Immunofluorescence: HeLa cells stained with ARG55857 anti-RPLP0P6 antibody (green) at 1:25 dilution. Cytoplasmic actin was counterstained with Alexa Fluor® 555 conjugated with Phalloidin (red).



ARG55857 anti-RPLP0P6 antibody IHC-P image

Immunohistochemistry: Paraffin-embedded Human stomach tissue stained with ARG55857 anti-RPLP0P6 antibody at 1:25 dilution.



ARG55857 anti-RPLP0P6 antibody WB image

Western blot: 35 µg of U251 cell lysate stained with ARG55857 anti-RPLP0P6 antibody.