

ARG55940 anti-CD44 antibody [156-3C11]

Package: 50 µg
Store at: -20°C

Summary

Product Description	Mouse Monoclonal antibody [156-3C11] recognizes CD44
Tested Reactivity	Hu
Tested Application	FACS, ICC/IF, IHC-P, WB
Host	Mouse
Clonality	Monoclonal
Clone	156-3C11
Isotype	IgG2a, kappa
Target Name	CD44
Species	Human
Immunogen	Stimulated Human leukocytes.
Conjugation	Un-conjugated
Alternate Names	MDU2; MDU3; GP90 lymphocyte homing/adhesion receptor; Hermes antigen; Extracellular matrix receptor III; PGP-I; Epican; CDW44; Phagocytic glycoprotein 1; Pgp1; HUTCH-I; MC56; Hyaluronate receptor; CD antigen CD44; Heparan sulfate proteoglycan; CD44 antigen; LHR; IN; HCELL; Phagocytic glycoprotein I; PGP-1; CSPG8; MIC4; ECMR-III; CDw44

Application Instructions

Application table	Application	Dilution
	FACS	2 - 4 µg/10 ⁶ cells
	ICC/IF	2 - 5 µg/ml
	IHC-P	2 - 5 µg/ml
	WB	1 - 2 µg/ml

Application Note

IHC-P: Antigen Retrieval: Boil tissue section in 10 mM Citrate buffer (pH 6.0) for 10-20 min, followed by cooling at RT for 20 min.
* The dilutions indicate recommended starting dilutions and the optimal dilutions or concentrations should be determined by the scientist.

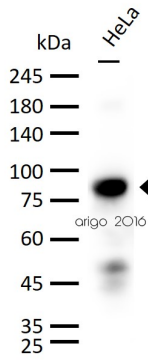
Properties

Form	Liquid
Purification	Purification with Protein G.
Buffer	PBS (pH 7.4), 0.05% Sodium azide and 0.1 mg/ml BSA
Preservative	0.05% Sodium azide
Stabilizer	0.1 mg/ml BSA

Concentration	0.2 mg/ml
Storage instruction	For continuous use, store undiluted antibody at 2-8°C for up to a week. For long-term storage, aliquot and store at -20°C or below. Storage in frost free freezers is not recommended. Avoid repeated freeze/thaw cycles. Suggest spin the vial prior to opening. The antibody solution should be gently mixed before use.
Note	For laboratory research only, not for drug, diagnostic or other use.

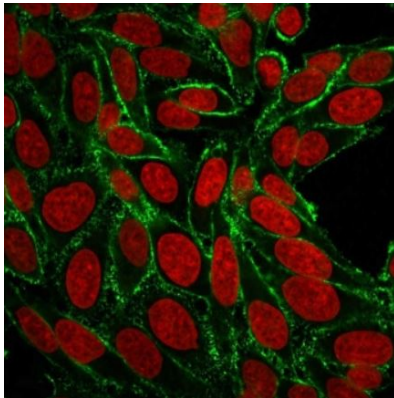
Bioinformation

Database links	GeneID: 960 Human Swiss-port # P16070 Human
Gene Symbol	CD44
Gene Full Name	CD44 molecule (Indian blood group)
Background	The protein encoded by this gene is a cell-surface glycoprotein involved in cell-cell interactions, cell adhesion and migration. It is a receptor for hyaluronic acid (HA) and can also interact with other ligands, such as osteopontin, collagens, and matrix metalloproteinases (MMPs). This protein participates in a wide variety of cellular functions including lymphocyte activation, recirculation and homing, hematopoiesis, and tumor metastasis. Transcripts for this gene undergo complex alternative splicing that results in many functionally distinct isoforms, however, the full length nature of some of these variants has not been determined. Alternative splicing is the basis for the structural and functional diversity of this protein, and may be related to tumor metastasis. [provided by RefSeq, Jul 2008]
Function	Receptor for hyaluronic acid (HA). Mediates cell-cell and cell-matrix interactions through its affinity for HA, and possibly also through its affinity for other ligands such as osteopontin, collagens, and matrix metalloproteinases (MMPs). Adhesion with HA plays an important role in cell migration, tumor growth and progression. In cancer cells, may play an important role in invadopodia formation. Also involved in lymphocyte activation, recirculation and homing, and in hematopoiesis. Altered expression or dysfunction causes numerous pathogenic phenotypes. Great protein heterogeneity due to numerous alternative splicing and post-translational modification events. [UniProt]
Research Area	Cancer antibody; Developmental Biology antibody; Immune System antibody; Chondrogenesis Study antibody
Calculated Mw	82 kDa
PTM	Proteolytically cleaved in the extracellular matrix by specific proteinases (possibly MMPs) in several cell lines and tumors. N- and O-glycosylated. O-glycosylation contains more-or-less-sulfated chondroitin sulfate glycans, whose number may affect the accessibility of specific proteinases to their cleavage site(s). It is uncertain if O-glycosylation occurs on Thr-637 or Thr-638. Phosphorylated; activation of PKC results in the dephosphorylation of Ser-706 (constitutive phosphorylation site), and the phosphorylation of Ser-672.
Cellular Localization	Cell surface



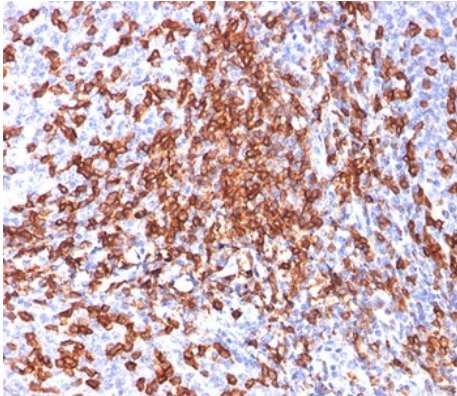
ARG55940 anti-CD44 antibody [156-3C11] WB image

Western blot: 30 µg of HeLa cell lysates stained with ARG55940 anti-CD44 antibody [156-3C11] at 1 µg/ml dilution.



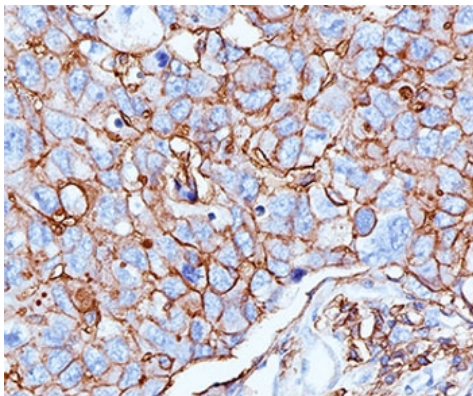
ARG55940 anti-CD44 antibody [156-3C11] ICC/IF image

Immunofluorescence: HeLa cells stained with ARG55940 anti-CD44 antibody [156-3C11] (green). Reddot (red) for nuclear staining.



ARG55940 anti-CD44 antibody [156-3C11] IHC-P image

Immunohistochemistry: Human tonsil stained with ARG55940 anti-CD44 antibody [156-3C11].



ARG55940 anti-CD44 antibody [156-3C11] IHC-P image

Immunohistochemistry: Human breast cancer stained with ARG55940 anti-CD44 antibody [156-3C11].