

## ARG55945 anti-CD66e / CEA antibody [COL-1]

Package: 50 µg  
Store at: -20°C

### Summary

Product Description	Mouse Monoclonal antibody [COL-1] recognizes CD66e / CEA
Tested Reactivity	Hu
Tested Application	IHC-P, WB
Host	Mouse
Clonality	Monoclonal
Clone	COL-1
Isotype	IgG2a, kappa
Target Name	CD66e / CEA
Species	Human
Immunogen	Human colon carcinoma extract.
Conjugation	Un-conjugated
Alternate Names	Carcinoembryonic antigen-related cell adhesion molecule 5; CEA; CD66e; CD antigen CD66e; Carcinoembryonic antigen; Meconium antigen 100

### Application Instructions

Application table	Application	Dilution
	IHC-P	2 - 5 µg/ml
	WB	1 - 2 µg/ml
Application Note	<p>IHC-P: Antigen Retrieval: Boil tissue section in 10 mM Citrate buffer (pH 6.0) for 10-20 min, followed by cooling at RT for 20 min.</p> <p>* The dilutions indicate recommended starting dilutions and the optimal dilutions or concentrations should be determined by the scientist.</p>	

### Properties

Form	Liquid
Purification	Purification with Protein G.
Buffer	PBS (pH 7.4), 0.05% Sodium azide and 0.1 mg/ml BSA
Preservative	0.05% Sodium azide
Stabilizer	0.1 mg/ml BSA
Concentration	0.2 mg/ml
Storage instruction	For continuous use, store undiluted antibody at 2-8°C for up to a week. For long-term storage, aliquot and store at -20°C or below. Storage in frost free freezers is not recommended. Avoid repeated freeze/thaw cycles. Suggest spin the vial prior to opening. The antibody solution should be gently mixed

before use.

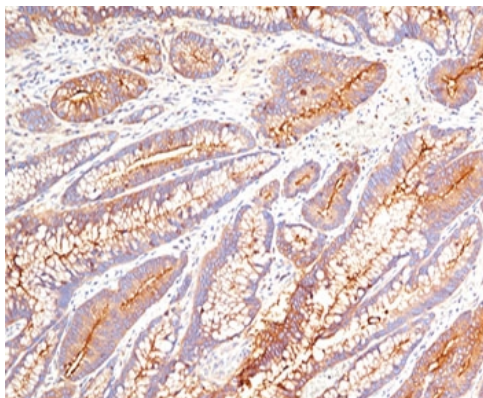
#### Note

For laboratory research only, not for drug, diagnostic or other use.

## Bioinformation

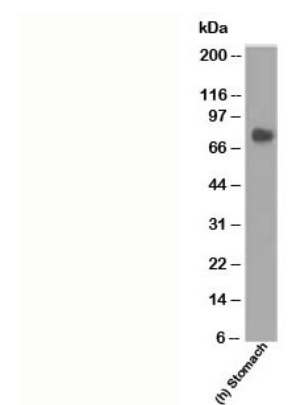
Database links	<a href="#">GeneID: 1048 Human</a> <a href="#">Swiss-port # P06731 Human</a>
Gene Symbol	CEACAM5
Gene Full Name	carcinoembryonic antigen-related cell adhesion molecule 5
Background	This gene encodes a cell surface glycoprotein that represents the founding member of the carcinoembryonic antigen (CEA) family of proteins. The encoded protein is used as a clinical biomarker for gastrointestinal cancers and may promote tumor development through its role as a cell adhesion molecule. Additionally, the encoded protein may regulate differentiation, apoptosis, and cell polarity. This gene is present in a CEA family gene cluster on chromosome 19. Alternative splicing results in multiple transcript variants. [provided by RefSeq, Jul 2015]
Function	Cell surface glycoprotein that plays a role in cell adhesion and in intracellular signaling. Receptor for E.coli Dr adhesins. [UniProt]
Calculated Mw	77 kDa
PTM	Complex immunoreactive glycoprotein with a MW of 180 kDa comprising 60% carbohydrate.
Cellular Localization	Cytoplasmic and luminal surface

## Images



ARG55945 anti-CD66e / CEA antibody [COL-1] IHC-P image

Immunohistochemistry: Human colon carcinoma stained with ARG55945 anti-CD66e / CEA antibody [COL-1].



ARG55945 anti-CD66e / CEA antibody [COL-1] WB image

Western blot: Human stomach lysate stained with ARG55945 anti-CD66e / CEA antibody [COL-1].