

ARG55951 anti-MART1 / Melan A antibody [M2-9E3]

Package: 50 µg
Store at: -20°C

Summary

Product Description	Mouse Monoclonal antibody [M2-9E3] recognizes MART1 / Melan A
Tested Reactivity	Hu, Ms, Rat
Tested Application	FACS, ICC/IF, IHC-P, WB
Host	Mouse
Clonality	Monoclonal
Clone	M2-9E3
Isotype	IgG2b, kappa
Target Name	MART1 / Melan A
Species	Human
Immunogen	Recombinant Human MART-1 protein.
Conjugation	Un-conjugated
Alternate Names	MART-1; MART1; Protein Melan-A; Antigen SK29-AA; Antigen LB39-AA; Melanoma antigen recognized by T-cells 1

Application Instructions

Application table	Application	Dilution
	FACS	1 - 2 µg/10 ⁶ cells
	ICC/IF	2 - 5 µg/ml
	IHC-P	2 - 5 µg/ml
	WB	1 - 2 µg/ml
Application Note	IHC-P: Antigen Retrieval: Boil tissue section in 10 mM Citrate buffer (pH 6.0) for 10-20 min, followed by cooling at RT for 20 min. * The dilutions indicate recommended starting dilutions and the optimal dilutions or concentrations should be determined by the scientist.	

Properties

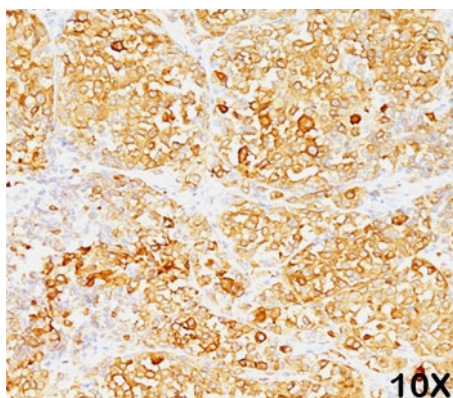
Form	Liquid
Purification	Purification with Protein G.
Buffer	PBS (pH 7.4), 0.05% Sodium azide and 0.1 mg/ml BSA
Preservative	0.05% Sodium azide
Stabilizer	0.1 mg/ml BSA
Concentration	0.2 mg/ml

Storage instruction	For continuous use, store undiluted antibody at 2-8°C for up to a week. For long-term storage, aliquot and store at -20°C or below. Storage in frost free freezers is not recommended. Avoid repeated freeze/thaw cycles. Suggest spin the vial prior to opening. The antibody solution should be gently mixed before use.
Note	For laboratory research only, not for drug, diagnostic or other use.

Bioinformation

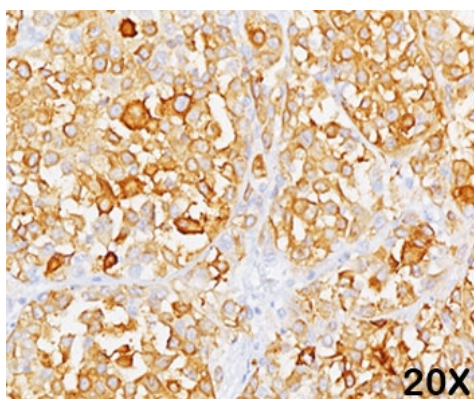
Database links	GeneID: 2315 Human Swiss-port # Q16655 Human
Gene Symbol	MLANA
Gene Full Name	melan-A
Function	Involved in melanosome biogenesis by ensuring the stability of GPR143. Plays a vital role in the expression, stability, trafficking, and processing of melanocyte protein PMEL, which is critical to the formation of stage II melanosomes. [UniProt]
Calculated Mw	13 kDa
PTM	Acylated.
Cellular Localization	Cytoplasmic

Images



ARG55951 anti-MART1 / Melan A antibody [M2-9E3] IHC-P image

Immunohistochemistry: Formalin-fixed, paraffin-embedded Human melanoma stained with ARG55951 anti-MART1 / Melan A antibody [M2-9E3]. Note cytoplasmic cells.



ARG55951 anti-MART1 / Melan A antibody [M2-9E3] IHC-P image

Immunohistochemistry: Formalin-fixed, paraffin-embedded Human melanoma stained with ARG55951 anti-MART1 / Melan A antibody [M2-9E3]. Note cytoplasmic cells.