

ARG55960 anti-CD11c antibody [HC1/1]

Package: 50 µg
Store at: -20°C

Summary

Product Description	Mouse Monoclonal antibody [HC1/1] recognizes CD11c
Tested Reactivity	Hu
Tested Application	FACS, FuncSt, ICC/IF
Host	Mouse
Clonality	Monoclonal
Clone	HC1/1
Isotype	IgG1, kappa
Target Name	CD11c
Species	Human
Immunogen	Human monocytic U937 phorbol ester-treated cells.
Conjugation	Un-conjugated
Alternate Names	CD antigen CD11c; Leu M5; CD11C; SLEB6; Integrin alpha-X; Leukocyte adhesion glycoprotein p150,95 alpha chain; Leukocyte adhesion receptor p150,95; CD11 antigen-like family member C

Application Instructions

Application table	Application	Dilution
	FACS	0.5 - 1 µg/10 ⁶ cells
	FuncSt	
	ICC/IF	0.5 - 1 µg/ml
Application Note	* The dilutions indicate recommended starting dilutions and the optimal dilutions or concentrations should be determined by the scientist.	

Properties

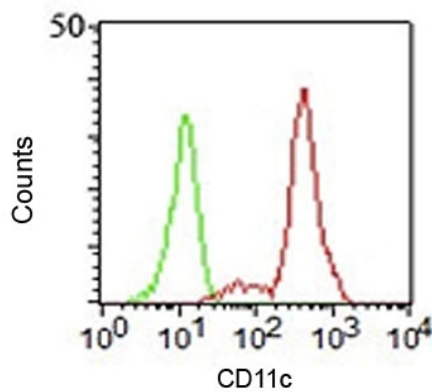
Form	Liquid
Purification	Purification with Protein G.
Buffer	PBS (pH 7.4), 0.05% Sodium azide and 0.1 mg/ml BSA
Preservative	0.05% Sodium azide
Stabilizer	0.1 mg/ml BSA
Concentration	0.2 mg/ml
Storage instruction	For continuous use, store undiluted antibody at 2-8°C for up to a week. For long-term storage, aliquot and store at -20°C or below. Storage in frost free freezers is not recommended. Avoid repeated freeze/thaw cycles. Suggest spin the vial prior to opening. The antibody solution should be gently mixed before use.

Note For laboratory research only, not for drug, diagnostic or other use.

Bioinformation

Database links	GeneID: 3687 Human Swiss-port # P20702 Human
Gene Symbol	ITGAX
Gene Full Name	integrin, alpha X (complement component 3 receptor 4 subunit)
Background	This gene encodes the integrin alpha X chain protein. Integrins are heterodimeric integral membrane proteins composed of an alpha chain and a beta chain. This protein combines with the beta 2 chain (ITGB2) to form a leukocyte-specific integrin referred to as inactivated-C3b (iC3b) receptor 4 (CR4). The alpha X beta 2 complex seems to overlap the properties of the alpha M beta 2 integrin in the adherence of neutrophils and monocytes to stimulated endothelium cells, and in the phagocytosis of complement coated particles. Two transcript variants encoding different isoforms have been found for this gene. [provided by RefSeq, Nov 2013]
Function	Integrin alpha-X/beta-2 is a receptor for fibrinogen. It recognizes the sequence G-P-R in fibrinogen. It mediates cell-cell interaction during inflammatory responses. It is especially important in monocyte adhesion and chemotaxis. [UniProt]
Calculated Mw	128 kDa
Cellular Localization	Cell surface

Images



ARG55960 anti-CD11c antibody [HC1/1] FACS image

Flow Cytometry: Human PBMCs stained with ARG55960 anti-CD11c antibody [HC1/1] (red) and isotype control antibody (green).