

ARG55990 anti-HMW Cytokeratin antibody [34BE12]

Package: 50 µg
Store at: -20°C

Summary

Product Description	Mouse Monoclonal antibody [34BE12] recognizes HMW Cytokeratin
Tested Reactivity	Hu, Ms, Rat
Tested Application	FACS, ICC/IF, IHC-P, WB
Host	Mouse
Clonality	Monoclonal
Clone	34BE12
Isotype	IgG1, kappa
Target Name	HMW Cytokeratin
Species	Human
Immunogen	Solubilized cytokeratin extract from Human stratum corneum.
Conjugation	Un-conjugated
Alternate Names	67 kDa cytokeratin; KRT1A; EPPK; Keratin, type II cytoskeletal 1; EHK1; K1; Keratin-1; CK1; Cytokeratin-1; Hair alpha protein; Type-II keratin Kb1; CK-1; NEPPK; EHK

Application Instructions

Application table	Application	Dilution
	FACS	0.5 - 1 µg/10 ⁶ cells
	ICC/IF	0.5 - 1.0 µg/ml
	IHC-P	0.5 - 1.0 µg/ml
	WB	0.5 - 1.0 µg/ml

Application Note Antigen retrieval for IHC-P: Staining of formalin-fixed tissues requires boiling tissue sections in 10mM citrate buffer, pH 6.0, for 10-20 min followed by cooling at RT for 20 min.

* The dilutions indicate recommended starting dilutions and the optimal dilutions or concentrations should be determined by the scientist.

Properties

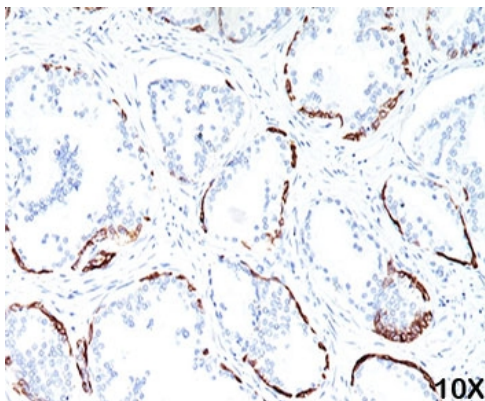
Form	Liquid
Purification	Purification with Protein G.
Buffer	PBS (pH 7.4), 0.05% Sodium azide and 0.1 mg/ml BSA
Preservative	0.05% Sodium azide
Stabilizer	0.1 mg/ml BSA

Concentration	0.2 mg/ml
Storage instruction	For continuous use, store undiluted antibody at 2-8°C for up to a week. For long-term storage, aliquot and store at -20°C or below. Storage in frost free freezers is not recommended. Avoid repeated freeze/thaw cycles. Suggest spin the vial prior to opening. The antibody solution should be gently mixed before use.
Note	For laboratory research only, not for drug, diagnostic or other use.

Bioinformation

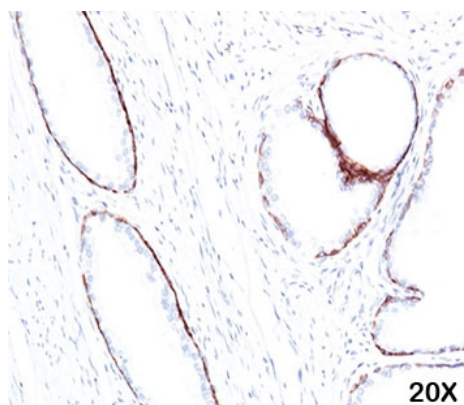
Gene Symbol	KRT1
Gene Full Name	keratin 1, type II
Background	The protein encoded by this gene is a member of the keratin gene family. The type II cytokeratins consist of basic or neutral proteins which are arranged in pairs of heterotypic keratin chains coexpressed during differentiation of simple and stratified epithelial tissues. This type II cytokeratin is specifically expressed in the spinous and granular layers of the epidermis with family member KRT10 and mutations in these genes have been associated with bullous congenital ichthyosiform erythroderma. The type II cytokeratins are clustered in a region of chromosome 12q12-q13. [provided by RefSeq, Jul 2008]
Function	May regulate the activity of kinases such as PKC and SRC via binding to integrin beta-1 (ITB1) and the receptor of activated protein kinase C (RACK1/GNB2L1). In complex with C1QBP is a high affinity receptor for kininogen-1/HMWK. [UniProt]
Research Area	Signaling Transduction antibody; Carcinoma Marker antibody
Calculated Mw	66 kDa
PTM	Undergoes deimination of some arginine residues (citrullination).
Cellular Localization	Cytoplasmic

Images



ARG55990 anti-HMW Cytokeratin antibody [34BE12] IHC-P image

Immunohistochemistry: Human prostate (10X) stained with ARG55990 anti-HMW Cytokeratin antibody [34BE12].



ARG55990 anti-HMW Cytokeratin antibody [34BE12] IHC-P image

Immunohistochemistry: Human prostate (20X) stained with ARG55990 anti-HMW Cytokeratin antibody [34BE12].