

ARG55991 anti-acidic Cytokeratin antibody [AE1]

Package: 50 µg
Store at: -20°C

Summary

Product Description	Mouse Monoclonal antibody [AE1] recognizes acidic Cytokeratin
Tested Reactivity	Hu, Ms, Rat
Tested Application	FACS, ICC/IF, IHC-P, WB
Host	Mouse
Clonality	Monoclonal
Clone	AE1
Isotype	IgG1
Target Name	acidic Cytokeratin
Species	Human
Immunogen	Solubilized cytokeratin extract from Human stratum corneum.
Conjugation	Un-conjugated
Alternate Names	KPP; K10; CK-10; BIE; Keratin, type I cytoskeletal 10; Cytokeratin-10; CK10; BCIE; Keratin-10; EHK

Application Instructions

Application table	Application	Dilution
	FACS	0.5 - 1 µg/10 ⁶ cells
	ICC/IF	1 - 5 µg/ml
	IHC-P	1 - 5 µg/ml
	WB	0.5 - 1 µg/ml

Application Note IHC-P: Antigen Retrieval: Boil tissue section in 10 mM Citrate buffer (pH 6.0) for 10-20 min, followed by cooling at RT for 20 min.
* The dilutions indicate recommended starting dilutions and the optimal dilutions or concentrations should be determined by the scientist.

Properties

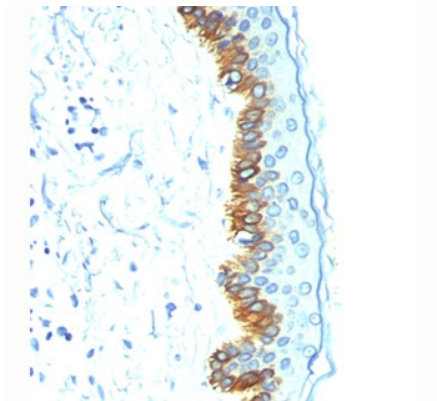
Form	Liquid
Purification	Purification with Protein G.
Buffer	PBS (pH 7.4), 0.05% Sodium azide and 0.1 mg/ml BSA
Preservative	0.05% Sodium azide
Stabilizer	0.1 mg/ml BSA
Concentration	0.2 mg/ml

Storage instruction	For continuous use, store undiluted antibody at 2-8°C for up to a week. For long-term storage, aliquot and store at -20°C or below. Storage in frost free freezers is not recommended. Avoid repeated freeze/thaw cycles. Suggest spin the vial prior to opening. The antibody solution should be gently mixed before use.
Note	For laboratory research only, not for drug, diagnostic or other use.

Bioinformation

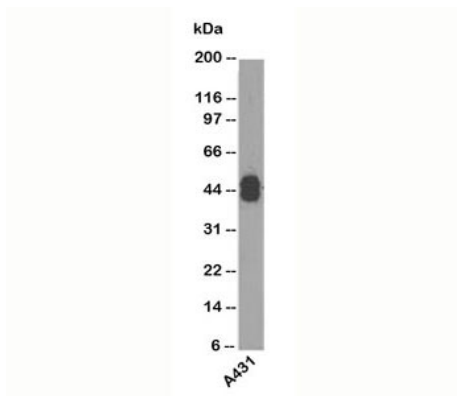
Gene Symbol	KRT10
Gene Full Name	keratin 10, type I
Background	This gene encodes a member of the type I (acidic) cytokeratin family, which belongs to the superfamily of intermediate filament (IF) proteins. Keratins are heteropolymeric structural proteins which form the intermediate filament. These filaments, along with actin microfilaments and microtubules, compose the cytoskeleton of epithelial cells. Mutations in this gene are associated with epidermolytic hyperkeratosis. This gene is located within a cluster of keratin family members on chromosome 17q21. [provided by RefSeq, Jul 2008]
Calculated Mw	59 kDa
Cellular Localization	Cytoplasmic

Images



ARG55991 anti-acidic Cytokeratin antibody [AE1] IHC-P image

Immunohistochemistry: Human skin stained with ARG55991 anti-acidic Cytokeratin antibody [AE1].



ARG55991 anti-acidic Cytokeratin antibody [AE1] WB image

Western blot: A431 cell lysate stained with ARG55991 anti-acidic Cytokeratin antibody [AE1].