

ARG55993 anti-Cytokeratin 4+5+6+8+10+13+18 antibody [C11]

Package: 50 µg
Store at: -20°C

Summary

Product Description	Mouse Monoclonal antibody [C11] recognizes Cytokeratin 4+5+6+8+10+13+18
Tested Reactivity	Hu, Ms, Rat
Tested Application	FACS, ICC/IF, IHC-P, WB
Host	Mouse
Clonality	Monoclonal
Clone	C11
Isotype	IgG1
Target Name	Cytokeratin 4+5+6+8+10+13+18
Species	Human
Immunogen	A keratin-enriched preparation from cultured Human A431 cells.
Conjugation	Un-conjugated
Alternate Names	K4; CK4; CK-4; CYK4; WSN1; Keratin, type II cytoskeletal 4

Application Instructions

Application table	Application	Dilution
	FACS	1 - 2 µg/10 ⁶ cells
	ICC/IF	2 - 5 µg/ml
	IHC-P	2 - 5 µg/ml
	WB	1 - 2 µg/ml

Application Note IHC-P: Antigen Retrieval: Boil tissue section in 10 mM Citrate buffer (pH 6.0) for 10-20 min, followed by cooling at RT for 20 min.
* The dilutions indicate recommended starting dilutions and the optimal dilutions or concentrations should be determined by the scientist.

Properties

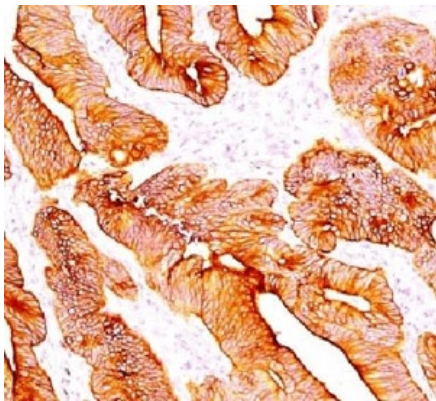
Form	Liquid
Purification	Purification with Protein G.
Buffer	PBS (pH 7.4), 0.05% Sodium azide and 0.1 mg/ml BSA
Preservative	0.05% Sodium azide
Stabilizer	0.1 mg/ml BSA
Concentration	0.2 mg/ml

Storage instruction	For continuous use, store undiluted antibody at 2-8°C for up to a week. For long-term storage, aliquot and store at -20°C or below. Storage in frost free freezers is not recommended. Avoid repeated freeze/thaw cycles. Suggest spin the vial prior to opening. The antibody solution should be gently mixed before use.
Note	For laboratory research only, not for drug, diagnostic or other use.

Bioinformation

Gene Symbol	KRT4
Gene Full Name	keratin 4
Background	The protein encoded by this gene is a member of the keratin gene family. The type II cytokeratins consist of basic or neutral proteins which are arranged in pairs of heterotypic keratin chains coexpressed during differentiation of simple and stratified epithelial tissues. This type II cytokeratin is specifically expressed in differentiated layers of the mucosal and esophageal epithelia with family member KRT13. Mutations in these genes have been associated with White Sponge Nevus, characterized by oral, esophageal, and anal leukoplakia. The type II cytokeratins are clustered in a region of chromosome 12q12-q13. [provided by RefSeq, Jul 2008]
Calculated Mw	57 kDa
Cellular Localization	Cytoplasmic

Images



ARG55993 anti-Cytokeratin 4+5+6+8+10+13+18 antibody [C11] IHC-P image

Immunohistochemistry: Formalin-fixed and paraffin-embedded Human colon carcinoma stained with ARG55993 anti-Cytokeratin 4+5+6+8+10+13+18 antibody [C11].