

ARG56000 anti-CD66e / CEA antibody [C66/1009]

Package: 50 µg
Store at: -20°C

Summary

Product Description	Mouse Monoclonal antibody [C66/1009] recognizes CD66e / CEA
Tested Reactivity	Hu
Tested Application	IHC-P
Host	Mouse
Clonality	Monoclonal
Clone	C66/1009
Isotype	IgG2a, kappa
Target Name	CD66e / CEA
Species	Human
Immunogen	Human full-length recombinant CEA protein.
Conjugation	Un-conjugated
Alternate Names	Carcinoembryonic antigen-related cell adhesion molecule 5; CEA; CD66e; CD antigen CD66e; Carcinoembryonic antigen; Meconium antigen 100

Application Instructions

Application table	Application	Dilution
	IHC-P	0.5 - 1 µg/ml
Application Note	<p>IHC-P: Antigen Retrieval: Boil tissue section in 10 mM Citrate buffer (pH 6.0) for 10-20 min, followed by cooling at RT for 20 min.</p> <p>* The dilutions indicate recommended starting dilutions and the optimal dilutions or concentrations should be determined by the scientist.</p>	

Properties

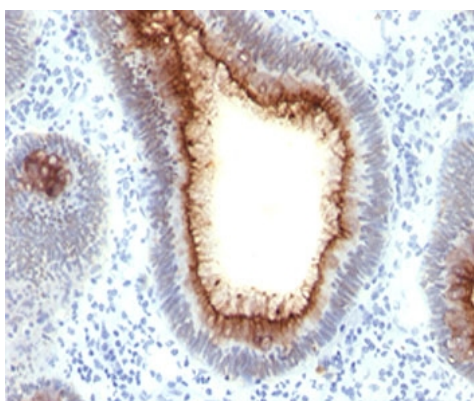
Form	Liquid
Purification	Purification with Protein G.
Buffer	PBS (pH 7.4), 0.05% Sodium azide and 0.1 mg/ml BSA
Preservative	0.05% Sodium azide
Stabilizer	0.1 mg/ml BSA
Concentration	0.2 mg/ml
Storage instruction	For continuous use, store undiluted antibody at 2-8°C for up to a week. For long-term storage, aliquot and store at -20°C or below. Storage in frost free freezers is not recommended. Avoid repeated freeze/thaw cycles. Suggest spin the vial prior to opening. The antibody solution should be gently mixed before use.

Note For laboratory research only, not for drug, diagnostic or other use.

Bioinformation

Database links	GeneID: 1048 Human Swiss-port # P06731 Human
Gene Symbol	CEACAM5
Gene Full Name	carcinoembryonic antigen-related cell adhesion molecule 5
Background	This gene encodes a cell surface glycoprotein that represents the founding member of the carcinoembryonic antigen (CEA) family of proteins. The encoded protein is used as a clinical biomarker for gastrointestinal cancers and may promote tumor development through its role as a cell adhesion molecule. Additionally, the encoded protein may regulate differentiation, apoptosis, and cell polarity. This gene is present in a CEA family gene cluster on chromosome 19. Alternative splicing results in multiple transcript variants. [provided by RefSeq, Jul 2015]
Function	Cell surface glycoprotein that plays a role in cell adhesion and in intracellular signaling. Receptor for E.coli Dr adhesins. [UniProt]
Calculated Mw	77 kDa
PTM	Complex immunoreactive glycoprotein with a MW of 180 kDa comprising 60% carbohydrate.
Cellular Localization	Cytoplasmic and luminal surface

Images



ARG56000 anti-CD66e / CEA antibody [C66/1009] IHC-P image

Immunohistochemistry: Formalin-fixed, paraffin-embedded Human colon carcinoma stained with ARG56000 anti-CD66e / CEA antibody [C66/1009].