

## ARG56072 anti-beta 2 Microglobulin antibody [BBM.1]

Package: 50 µg  
Store at: -20°C

### Summary

Product Description	Mouse Monoclonal antibody [BBM.1] recognizes beta 2 Microglobulin
Tested Reactivity	Hu
Tested Application	FACS, ICC/IF, IHC-Fr, WB
Host	Mouse
Clonality	Monoclonal
Clone	BBM.1
Isotype	IgG2b, kappa
Target Name	beta 2 Microglobulin
Species	Human
Immunogen	MOLT-4 Human T cell line.
Conjugation	Un-conjugated
Alternate Names	Beta-2-microglobulin

### Application Instructions

Application table	Application	Dilution
	FACS	1 - 2 µg/10 <sup>6</sup> cells
	ICC/IF	2 - 5 µg/ml
	IHC-Fr	2 - 5 µg/ml
	WB	1 - 2 µg/ml
Application Note	* The dilutions indicate recommended starting dilutions and the optimal dilutions or concentrations should be determined by the scientist.	
Positive Control	Raji	
Observed Size	~ 12 kDa	

### Properties

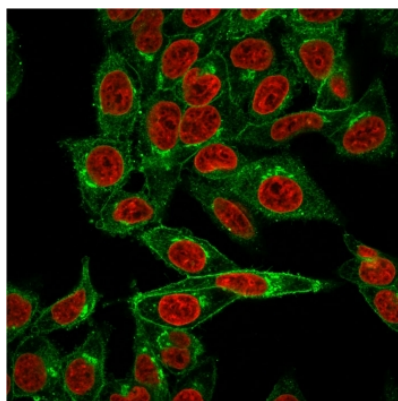
Form	Liquid
Purification	Purification with Protein G.
Buffer	PBS (pH 7.4), 0.05% Sodium azide and 0.1 mg/ml BSA
Preservative	0.05% Sodium azide
Stabilizer	0.1 mg/ml BSA
Concentration	0.2 mg/ml

Storage instruction	For continuous use, store undiluted antibody at 2-8°C for up to a week. For long-term storage, aliquot and store at -20°C or below. Storage in frost free freezers is not recommended. Avoid repeated freeze/thaw cycles. Suggest spin the vial prior to opening. The antibody solution should be gently mixed before use.
Note	For laboratory research only, not for drug, diagnostic or other use.

## Bioinformation

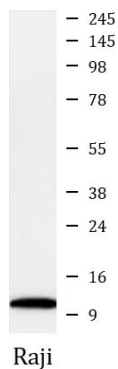
Database links	<a href="#">GeneID: 567 Human</a> <a href="#">Swiss-port # P61769 Human</a>
Gene Symbol	B2M
Gene Full Name	beta-2-microglobulin
Background	This gene encodes a serum protein found in association with the major histocompatibility complex (MHC) class I heavy chain on the surface of nearly all nucleated cells. The protein has a predominantly beta-pleated sheet structure that can form amyloid fibrils in some pathological conditions. The encoded antimicrobial protein displays antibacterial activity in amniotic fluid. A mutation in this gene has been shown to result in hypercatabolic hypoproteinemia.[provided by RefSeq, Aug 2014]
Function	Component of the class I major histocompatibility complex (MHC). Involved in the presentation of peptide antigens to the immune system. [UniProt]
Calculated Mw	14 kDa
PTM	Glycation of Ile-21 is observed in long-term hemodialysis patients.
Cellular Localization	Cytoplasmic

## Images



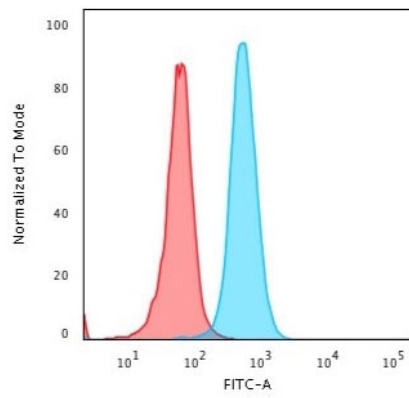
ARG56072 anti-beta 2 Microglobulin antibody [BBM.1] ICC/IF image

Immunofluorescence: Permeabilized HeLa cells stained with ARG56072 anti-beta 2 Microglobulin antibody [BBM.1] (green). Reddot (red) for nuclear staining.



ARG56072 anti-beta 2 Microglobulin antibody [BBM.1] WB image

Western blot: Raji cell lysate stained with ARG56072 anti-beta 2 Microglobulin antibody [BBM.1].



ARG56072 anti-beta 2 Microglobulin antibody [BBM.1] FACS image

Flow Cytometry: PFA-fixed HeLa cells stained with ARG56072 anti-beta 2 Microglobulin antibody [BBM.1] (blue); Isotype control (red).