

ARG56128 anti-Cytokeratin (pan) antibody [PAN-CK]

Package: 50 µg
Store at: -20°C

Summary

| | |
|---------------------|---|
| Product Description | Mouse Monoclonal antibody [PAN-CK] recognizes Cytokeratin (pan) |
| Tested Reactivity | Hu, Ms, Rat |
| Tested Application | FACS, IHC-P |
| Specificity | Twenty human keratins are resolved with two-dimensional gel electrophoresis into acidic (pI 6.0) subfamilies. This antibody cocktail recognizes acidic (Type I or LMW) and basic (Type II or HMW) cytokeratins, which include CK1, CK3, CK4, CK5, CK6, CK7, CK8, CK10, CK13, CK14, CK15, CK16, CK17, CK18 and CK19. |
| Host | Mouse |
| Clonality | Monoclonal |
| Clone | PAN-CK |
| Isotype | IgG, kappa |
| Target Name | Cytokeratin (pan) |
| Species | Human |
| Immunogen | Human epidermal keratin |
| Conjugation | Un-conjugated |
| Alternate Names | Type-II keratin Kb39; KRT1B; Keratin-77; K1B; K77; CK-1B; Cytokeratin-1B; Keratin, type II cytoskeletal 1b |

Application Instructions

| Application table | Application | Dilution |
|-------------------|---|----------------------------------|
| | FACS | 0.5 - 1 µg/10 ⁶ cells |
| | IHC-P | 0.5 - 1 µg/ml |
| Application Note | IHC-P: Antigen Retrieval: Boil tissue section in 10 mM Citrate buffer (pH 6.0) for 10-20 min, followed by cooling at RT for 20 min. * The dilutions indicate recommended starting dilutions and the optimal dilutions or concentrations should be determined by the scientist. | |

Properties

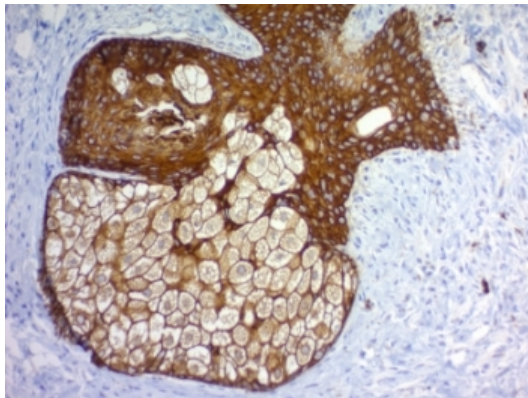
| | |
|--------------|--|
| Form | Liquid |
| Purification | Purification with Protein G. |
| Buffer | PBS (pH 7.4), 0.05% Sodium azide and 0.1 mg/ml BSA |
| Preservative | 0.05% Sodium azide |
| Stabilizer | 0.1 mg/ml BSA |

| | |
|---------------------|--|
| Concentration | 0.2 mg/ml |
| Storage instruction | For continuous use, store undiluted antibody at 2-8°C for up to a week. For long-term storage, aliquot and store at -20°C or below. Storage in frost free freezers is not recommended. Avoid repeated freeze/thaw cycles. Suggest spin the vial prior to opening. The antibody solution should be gently mixed before use. |
| Note | For laboratory research only, not for drug, diagnostic or other use. |

Bioinformation

| | |
|----------------|--|
| Gene Symbol | KRT77 |
| Gene Full Name | keratin 77, type II |
| Background | Keratins are intermediate filament proteins responsible for the structural integrity of epithelial cells and are subdivided into epithelial keratins and hair keratins. This gene encodes an epithelial keratin that is expressed in the skin and eccrine sweat glands. The type II keratins are clustered in a region of chromosome 12q13. [provided by RefSeq, Jun 2009] |
| Calculated Mw | 67 kDa (CK1); 64 kDa (CK3); 59 kDa (CK4); 58 kDa (CK5); 56 kDa (CK6); 55 kDa (CK7); 52 kDa (CK8); 56.5 kDa (CK10); 53 kDa (CK13); 50 kDa (CK14); 50 kDa (CK15); 48 kDa (CK16); 46 kDa (CK17); 45 kDa (CK18) and 40 kDa (CK19). |
| PTM | Undergoes deimination of some arginine residues (citrullination). |

Images



ARG56128 anti-Cytokeratin (pan) antibody [PAN-CK] IHC-P image

Immunohistochemistry: Formalin-fixed, paraffin-embedded Human skin stained with ARG56128 anti-Cytokeratin (pan) antibody [PAN-CK].