

ARG56156 anti-Spred 1 antibody

Package: 50 µg
Store at: -20°C

Summary

Product Description	Rabbit Polyclonal antibody recognizes Spred 1
Tested Reactivity	Hu, Ms, Rat
Tested Application	IHC-P, WB
Specificity	This Spred1 antibody is predicted to have no cross-reactivity to Spred2 or Spred3.
Host	Rabbit
Clonality	Polyclonal
Isotype	IgG
Target Name	Spred 1
Immunogen	Synthetic peptide (14 aa) within aa. 250-300 of Human Spred1.
Conjugation	Un-conjugated
Alternate Names	PPP1R147; NFLS; spred-1; hSpred1; Spred-1; Sprouty-related, EVH1 domain-containing protein 1

Application Instructions

Application table	Application	Dilution
	IHC-P	2.5 µg/ml
	WB	1 - 2 µg/ml
Application Note	* The dilutions indicate recommended starting dilutions and the optimal dilutions or concentrations should be determined by the scientist.	
Positive Control	Human brain tissue lysate	

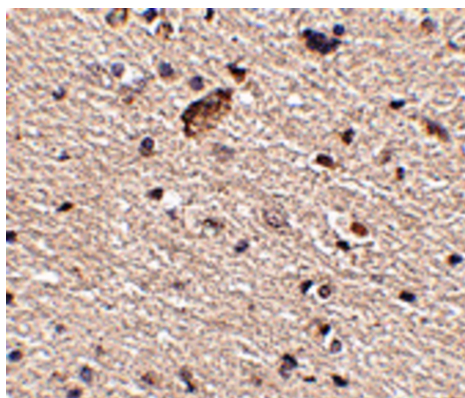
Properties

Form	Liquid
Purification	Affinity purification with immunogen.
Buffer	PBS and 0.02% Sodium azide
Preservative	0.02% Sodium azide
Concentration	1 mg/ml
Storage instruction	For continuous use, store undiluted antibody at 2-8°C for up to a week. For long-term storage, aliquot and store at -20°C or below. Storage in frost free freezers is not recommended. Avoid repeated freeze/thaw cycles. Suggest spin the vial prior to opening. The antibody solution should be gently mixed before use.
Note	For laboratory research only, not for drug, diagnostic or other use.

Bioinformation

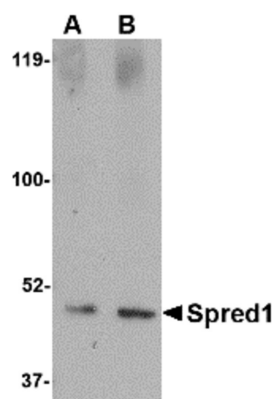
Database links	GeneID: 114715 Mouse GeneID: 161742 Human Swiss-port # Q7Z699 Human Swiss-port # Q924S8 Mouse
Gene Symbol	SPRED1
Gene Full Name	sprouty-related, EVH1 domain containing 1
Background	The protein encoded by this gene is a member of the Sprouty family of proteins and is phosphorylated by tyrosine kinase in response to several growth factors. The encoded protein can act as a homodimer or as a heterodimer with SPRED2 to regulate activation of the MAP kinase cascade. Defects in this gene are a cause of neurofibromatosis type 1-like syndrome (NFLS). [provided by RefSeq, Jul 2008]
Function	Tyrosine kinase substrate that inhibits growth-factor-mediated activation of MAP kinase. Negatively regulates hematopoiesis of bone marrow (By similarity). [UniProt]
Calculated Mw	50 kDa
PTM	Phosphorylated on tyrosine.

Images



ARG56156 anti-Spred 1 antibody IHC-P image

Immunohistochemistry: Human brain tissue stained with ARG56156 anti-Spred 1 antibody at 2.5 µg/ml dilution.



ARG56156 anti-Spred 1 antibody WB image

Western blot: Human brain tissue lysate stained with ARG56156 anti-Spred 1 antibody at (A) 1 and (B) 2 µg/ml dilution.