

## ARG56187 anti-Emi1 antibody [EMI1/1176]

Package: 50 µg  
Store at: -20°C

### Summary

Product Description	Mouse Monoclonal antibody [EMI1/1176] recognizes Emi1
Tested Reactivity	Hu
Tested Application	IHC-P, WB
Host	Mouse
Clonality	Monoclonal
Clone	EMI1/1176
Isotype	IgG2a, kappa
Target Name	Emi1
Species	Human
Immunogen	A recombinant fragment (203 amino acid residues between aa 1-250) from the human Emi1 protein.
Conjugation	Un-conjugated
Alternate Names	EMI1; FBX5; Early mitotic inhibitor 1; F-box only protein 5; Fbxo31

### Application Instructions

Application table	Application	Dilution
	IHC-P	2 - 5 µg/ml
	WB	1 - 2 µg/ml
Application Note	IHC-P: Antigen Retrieval: Boil tissue section in 10 mM Citrate buffer (pH 6.0) for 10-20 min, followed by cooling at RT for 20 min. * The dilutions indicate recommended starting dilutions and the optimal dilutions or concentrations should be determined by the scientist.	

### Properties

Form	Liquid
Purification	Purification with Protein G.
Buffer	PBS (pH 7.4), 0.05% Sodium azide and 0.1 mg/ml BSA.
Preservative	0.05% Sodium azide
Stabilizer	0.1 mg/ml BSA
Concentration	0.2 mg/ml
Storage instruction	For continuous use, store undiluted antibody at 2-8°C for up to a week. For long-term storage, aliquot and store at -20°C or below. Storage in frost free freezers is not recommended. Avoid repeated freeze/thaw cycles. Suggest spin the vial prior to opening. The antibody solution should be gently mixed before use.

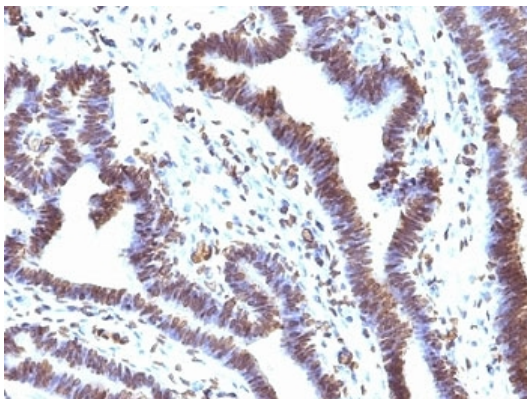
Note For laboratory research only, not for drug, diagnostic or other use.

## Bioinformation

---

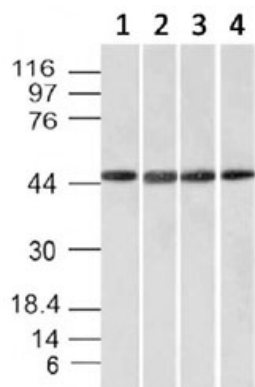
Database links	<a href="#">GeneID: 26271 Human</a> <a href="#">Swiss-port # Q9UKT4 Human</a>
Gene Symbol	FBXO5
Gene Full Name	F-box protein 5
Background	This gene encodes a member of the F-box protein family which is characterized by an approximately 40 amino acid motif, the F-box. The F-box proteins constitute one of the four subunits of the ubiquitin protein ligase complex called SCFs (SKP1-cullin-F-box), which function in phosphorylation-dependent ubiquitination. The F-box proteins are divided into 3 classes: Fbws containing WD-40 domains, Fbls containing leucine-rich repeats, and Fbxs containing either different protein-protein interaction modules or no recognizable motifs. The protein encoded by this gene belongs to the Fbxs class. This protein is similar to xenopus early mitotic inhibitor-1 (Emi1), which is a mitotic regulator that interacts with Cdc20 and inhibits the anaphase promoting complex. Alternatively spliced transcript variants encoding different isoforms have been identified. [provided by RefSeq, Dec 2008]
Function	Regulates progression through early mitosis by inhibiting the anaphase promoting complex/cyclosome (APC). Binds to the APC activators CDC20 and FZR1/CDH1 to prevent APC activation. Can also bind directly to the APC to inhibit substrate-binding. [UniProt]
Calculated Mw	Isoform 1: 50 kDa Isoform 2: 45 kDa
PTM	Phosphorylation by CDK2 and subsequently by PLK1 triggers degradation during early mitosis through ubiquitin-mediated proteolysis by the SCF ubiquitin ligase complex containing the F-box protein BTRC. This degradation is necessary for the activation of APC in late mitosis and subsequent mitotic progression. Ubiquitinated by the by the SCF(BTRC) complex following phosphorylation by PLK1.
Cellular Localization	Nuclear

## Images



ARG56187 anti-Emi1 antibody [EMI1/1176] IHC-P image

Immunohistochemistry: Formalin-fixed and paraffin-embedded Human ovarian carcinoma stained with ARG56187 anti-Emi1 antibody [EMI1/1176].



ARG56187 anti-Emi1 antibody [EMI1/1176] WB image

Western blot: 1) HeLa, 2) HepG2, 3) 293, and 4) K562 cell lysates stained with ARG56187 anti-Emi1 antibody [EMI1/1176].